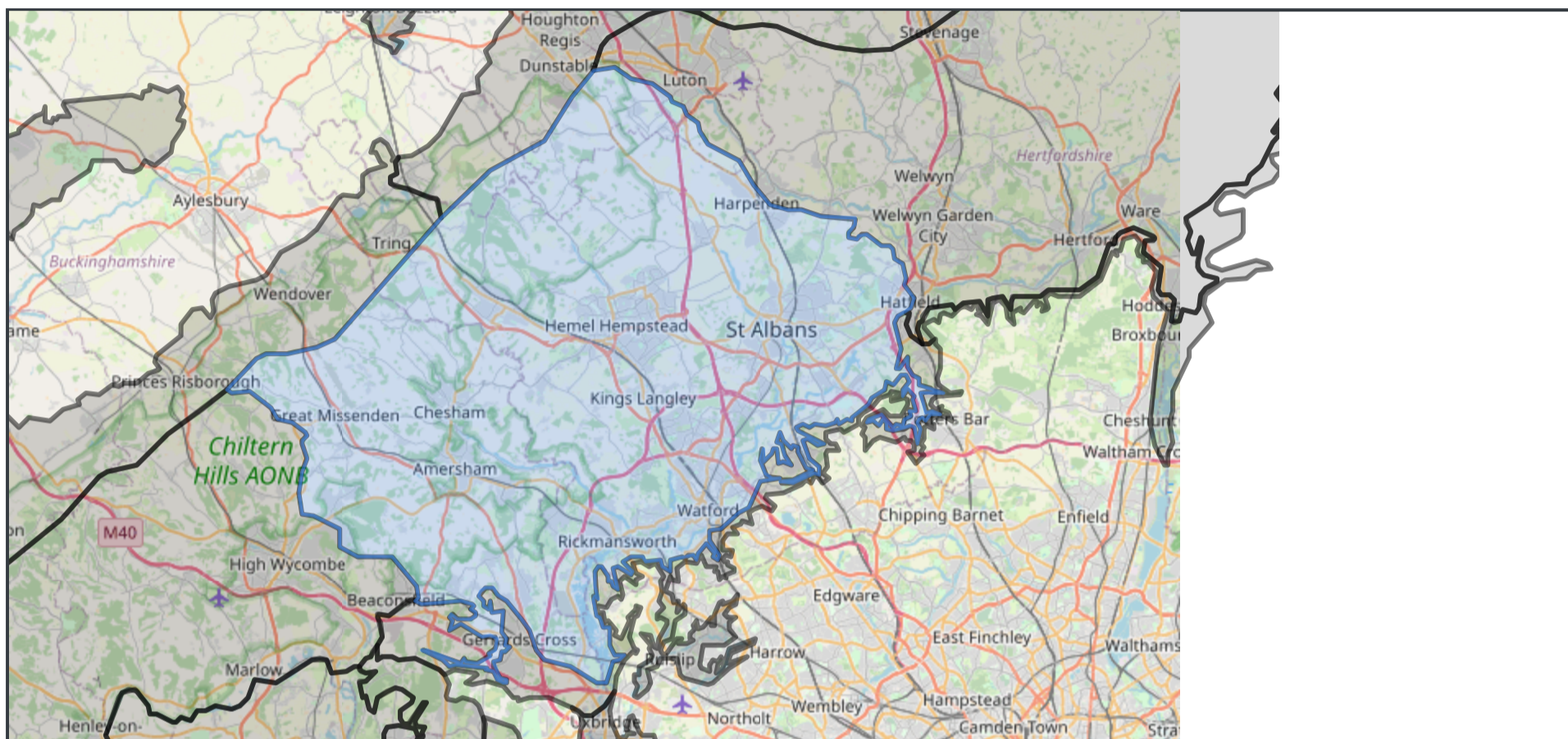




[Home](#) / [Thames](#) / [Thames GW](#) / [Colne GW](#) / Mid-Chilterns Chalk

# Mid-Chilterns Chalk Water Body Poor overall status

Viewing latest data (Updated on 01 February 2022). [Switch to draft river basin management plan data](#)



## Get Mid-Chilterns Chalk data

- [Download water body \(Shapefile\)](#)
- [Download water body \(GeoJSON\)](#)
- [Download classifications \(CSV\)](#)
- [Download investigations \(CSV\)](#)
- [Download challenges \(CSV\)](#)
- [Download objectives \(CSV\)](#)
- [Download protected areas \(CSV\)](#)

## Related links

- [Draft plan maps on ArcGIS online](#)
- [Draft flood risk management plans](#)

## Attributes

<b>Water Body ID</b> GB40601G601200	<b>Water Body Type</b> Groundwater Body	<b>Hydromorphological designation</b> not applicable	<b>NGR</b> TL0261203926
<b>Surface area</b> 729.744 km <sup>2</sup>	<b>Surveillance Water Body</b> No	<b>Groundwater area</b> 72974.352 ha	

# Classifications

Time period: Cycle 2 ▾

Classification Item	2013	2014	2015	2016	2019
Chemical Dependent Surface Water Body Status	Good	Good	Good	Good	Good
Chemical Drinking Water Protected Area	Poor	Poor	Poor	Poor	Poor
Chemical Saline Intrusion	Good	Good	Good	Good	Good
General Chemical Test	Good	Good	Good	Good	Poor
Overall Water Body	Poor	Poor	Poor	Poor	Poor
Quantitative	Poor	Poor	Poor	Poor	Poor
Quantitative Status element	Poor	Poor	Poor	Poor	Poor
Quantitative Dependent Surface Water Body Status	Poor	Poor	Poor	Poor	Poor
Quantitative GWDTEs test	Good	Good	Good	Good	Good
Quantitative Saline Intrusion	Good	Good	Good	Good	Good
Quantitative Water Balance	Poor	Poor	Poor	Poor	Poor
Chemical (GW)	Poor	Poor	Poor	Poor	Poor
Chemical Status element	Poor	Poor	Poor	Poor	Poor
Chemical Dependent Surface Water Body Status	Good	Good	Good	Good	Good
Chemical Drinking Water Protected Area	Poor	Poor	Poor	Poor	Poor
Chemical GWDTEs test	Good	Good	Good	Good	Good
Chemical Saline Intrusion	Good	Good	Good	Good	Good
General Chemical Test	Good	Good	Good	Good	Poor
Supporting elements (Groundwater)					
Prevent and Limit Objective	Active				Active
Trend Assessment	Upward trend	Upward trend	Upward trend	Upward trend	Upward trend
Trend Assessment	Upward trend	Upward trend	Upward trend	Upward trend	Upward trend

## Investigations into classification status

No data to show

## Reasons for not achieving good (RNAG) and reasons for deterioration (RFD)

All reasons (RFDs and RNAGs) attributed to the classification elements in this water body.

Reason Type	SWMI	Activity	Category	Classification Element	More information
RNAG	Diffuse source	Poor nutrient management	Agriculture and rural land management	Chemical Drinking Water Protected Area	<a href="#">Details</a>

Reason Type	SWMI	Activity	Category	Classification Element	More information
RNAG	Diffuse source	Poor nutrient management	Agriculture and rural land management	Trend Assessment	<a href="#">Details</a>
RNAG	Diffuse source	Poor nutrient management	Agriculture and rural land management	Chemical Drinking Water Protected Area	<a href="#">Details</a>
RNAG	Diffuse source	Contaminated land	Other	Chemical Drinking Water Protected Area	<a href="#">Details</a>
RNAG	Diffuse source	Poor nutrient management	Agriculture and rural land management	Trend Assessment	<a href="#">Details</a>
RNAG	Diffuse source	Contaminated land	Urban and transport	Trend Assessment	<a href="#">Details</a>
RNAG	Point source	Incidents	Industry	Chemical Drinking Water Protected Area	<a href="#">Details</a>
RNAG	Point source	Sewage discharge (continuous)	Water Industry	Trend Assessment	<a href="#">Details</a>
RNAG	Point source	Incidents	Urban and transport	Trend Assessment	<a href="#">Details</a>
RNAG	Point source	Private Sewage Treatment	Urban and transport	Trend Assessment	<a href="#">Details</a>
RNAG	Point source	Private Sewage Treatment	Urban and transport	Chemical Drinking Water Protected Area	<a href="#">Details</a>
RNAG	Point source	Sewage discharge (continuous)	Water Industry	Chemical Drinking Water Protected Area	<a href="#">Details</a>
RNAG	Flow	Groundwater abstraction	Water Industry	Quantitative Water Balance	<a href="#">Details</a>
RNAG	Flow	Groundwater abstraction	Water Industry	Quantitative Dependent Surface Water Body Status	<a href="#">Details</a>

## Reasons for not achieving good status by business sector

The issues preventing waters reaching good status and the sectors identified as contributing to them. The numbers in the table are individual counts of the reasons for not achieving good status with a confidence status of 'confirmed' and 'probable', where the latest classification is less than good status. There may be more than one reason in a single water body. Note, table does not include reasons for deterioration.

Significant water management issue	Physical modifications	Pollution from waste water	Pollution from towns, cities and transport	Changes to the natural flow and level of water	Invasive non-native species	Pollution from rural areas	Pollution from abandoned mines
Agriculture and rural land management	0	0	0	0	0	2	0
Industry	0	1	0	0	0	0	0
Mining and quarrying	0	0	0	0	0	0	0
Navigation	0	0	0	0	0	0	0
Urban and transport	0	0	1	0	0	0	0
Water Industry	0	1	0	2	0	0	0
Local & central government	0	0	0	0	0	0	0

Significant water management issue	Physical modifications	Pollution from waste water	Pollution from towns, cities and transport	Changes to the natural flow and level of water	Invasive non-native species	Pollution from rural areas	Pollution from abandoned mines
Domestic general public	0	0	0	0	0	0	0
Recreation	0	0	0	0	0	0	0
Waste treatment and disposal	0	0	0	0	0	0	0
Other	0	0	1	0	0	0	0
No sector responsible	0	0	0	0	0	0	0
Sector under investigation	0	0	0	0	0	0	0
<b>Total</b>	<b>0</b>	<b>2</b>	<b>2</b>	<b>2</b>	<b>0</b>	<b>2</b>	<b>0</b>

## Objectives

Classification Item	Status	Year	Reasons
<b>Overall Water Body</b>	<b>Poor</b>	2015	Disproportionately expensive: Disproportionate burdens; Disproportionately expensive: Unfavourable balance of costs and benefits
<b>Quantitative</b>	<b>Poor</b>	2015	Disproportionately expensive: Unfavourable balance of costs and benefits
<b>Quantitative Status element</b>	<b>Poor</b>	2015	Disproportionately expensive: Unfavourable balance of costs and benefits
<b>Quantitative Dependent Surface Water Body Status</b>	<b>Poor</b>	2015	Disproportionately expensive: Unfavourable balance of costs and benefits
<b>Quantitative GWDTes test</b>	<b>Good</b>	2015	
<b>Quantitative Saline Intrusion</b>	<b>Good</b>	2015	
<b>Quantitative Water Balance</b>	<b>Poor</b>	2015	Disproportionately expensive: Unfavourable balance of costs and benefits
<b>Chemical (GW)</b>	<b>Good</b>	2027	Disproportionately expensive: Disproportionate burdens
<b>Chemical Status element</b>	<b>Good</b>	2027	Disproportionately expensive: Disproportionate burdens
<b>Chemical Dependent Surface Water Body Status</b>	<b>Good</b>	2015	
<b>Chemical Drinking Water Protected Area</b>	<b>Good</b>	2027	Disproportionately expensive: Disproportionate burdens
<b>Chemical GWDTes test</b>	<b>Good</b>	2015	
<b>Chemical Saline Intrusion</b>	<b>Good</b>	2015	
<b>General Chemical Test</b>	<b>Good</b>	2015	

## Protected areas

PA Name	Id	Directive	Type	More information
LEE NVZ S443	S443	Nitrates Directive		
Hatfield G93	G93	Nitrates Directive		
Thame (Scotsgrove Brook to Thames) NVZ S479	S479	Nitrates Directive		

PA Name	Id	Directive	Type	More information
RUNLEY WOOD	GWSGZ0159	Safeguard Zone		
Vale of St Albans	GWSGZ0160	Safeguard Zone		
Eastbury	GWSGZ0275	Safeguard Zone		
Tyttenhamgar	GWSGZ0233	Safeguard Zone		
Netherwyld	GWSGZ0276	Safeguard Zone		
North Mymms G92	G92	Nitrates Directive		
BERKHAMPSTEAD	GWSGZ0156	Safeguard Zone		
North Mymms	GWSGZ0249	Safeguard Zone		
Periwinkle Lane	GWSGZ0277	Safeguard Zone		
Mid-Chilterns Chalk	UKGB40601G601200	Drinking Water Protected Area		
Crescent Road	GWSGZ0213	Safeguard Zone		
Tolpits Lane	GWSGZ0279	Safeguard Zone		

## Monitoring sites

---

## Upstream water bodies

---

## Downstream water bodies

---

[Contact Us](#) [Terms and Conditions](#) [Privacy Policy](#) [Cookies](#) [Accessibility](#)

### OGI

All content is available under the [Open Government Licence v3.0](#), except where otherwise stated

© Crown Copyright 2021

Built by [Swirl](#)