



**H Fraser
Consulting**
Contaminated Land
and Hydrogeology

**Proof of Evidence from Hannah Fraser
Employment Land to the north of Maple Cross Lodge, Maple Cross, Rickmansworth
GROUNDWATER**

APPENDIX B Figures (A3 Format)

Prepared for: Barwood Capital Ltd

Date: 28/03/2022

Status: FINAL

Reference: : 30422PoE1D3 Appendix B

© H Fraser Consulting Ltd 2022

Prepared by: H Fraser Consulting Ltd

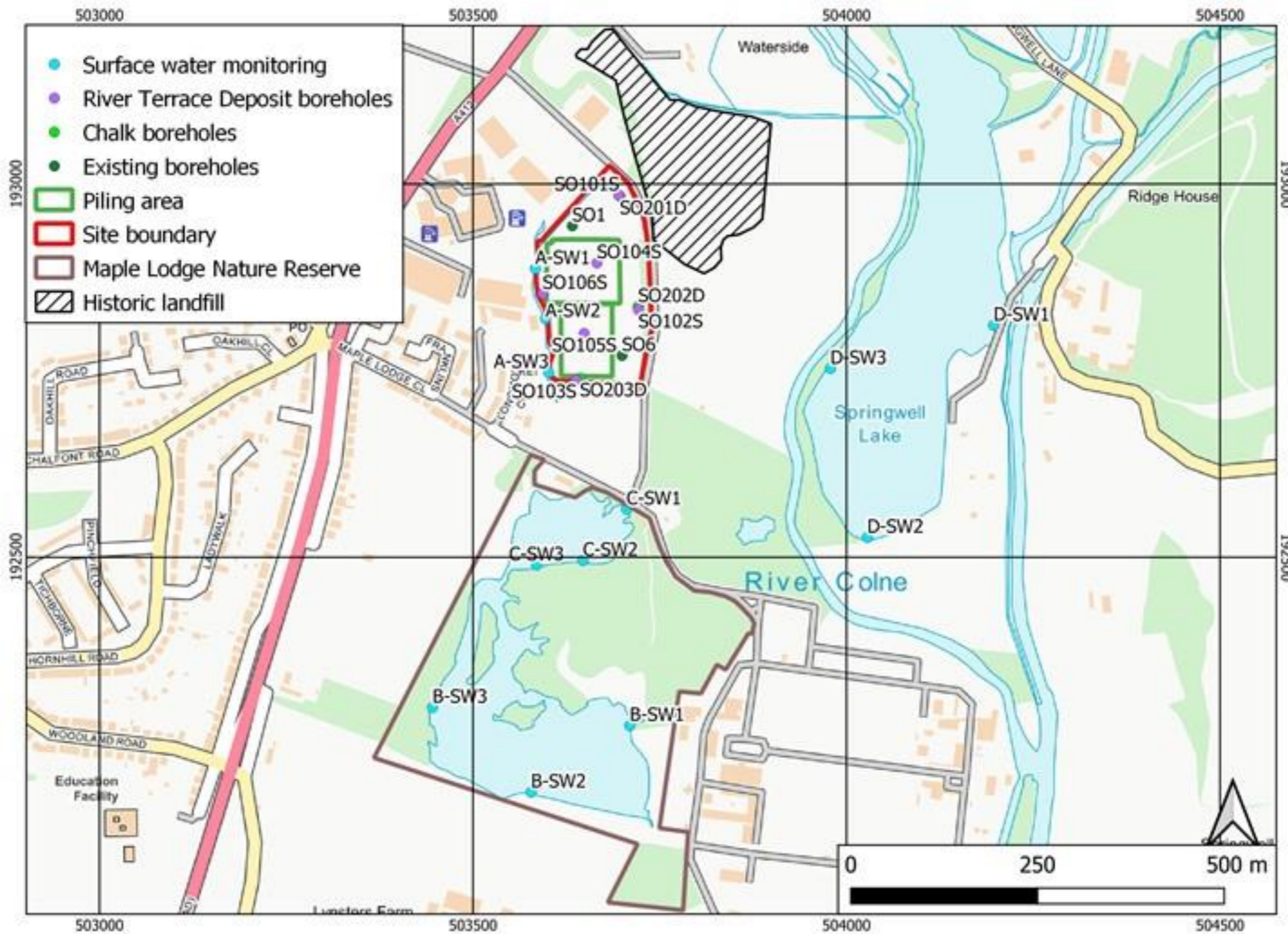


Figure Error! No text of specified style in document..1 Site location

Contains Ordnance Survey data © Crown copyright and database right 2022



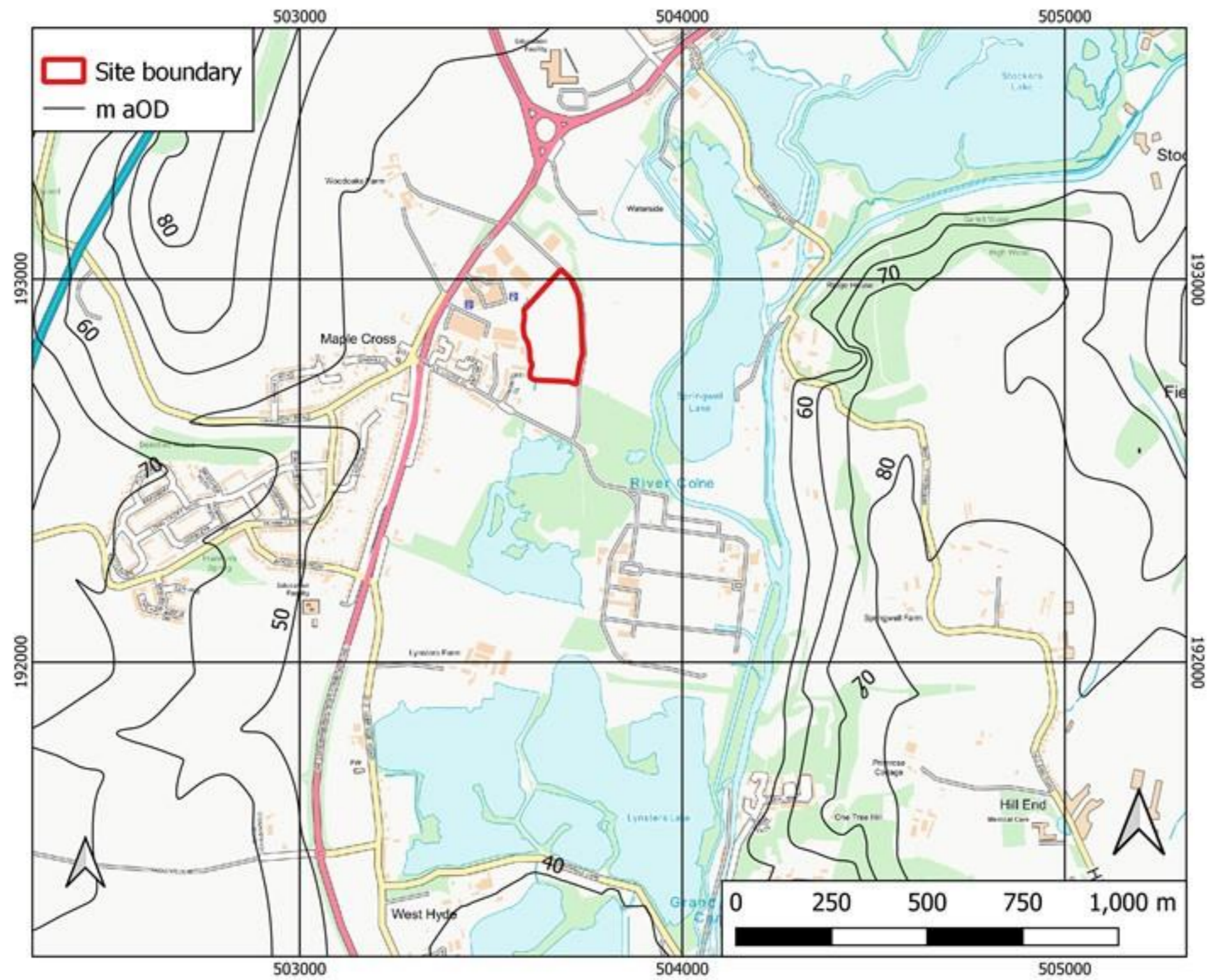


Figure Error! No text of specified style in document..2 Topographical contours

Contains Ordnance Survey data © Crown copyright and database right 2022



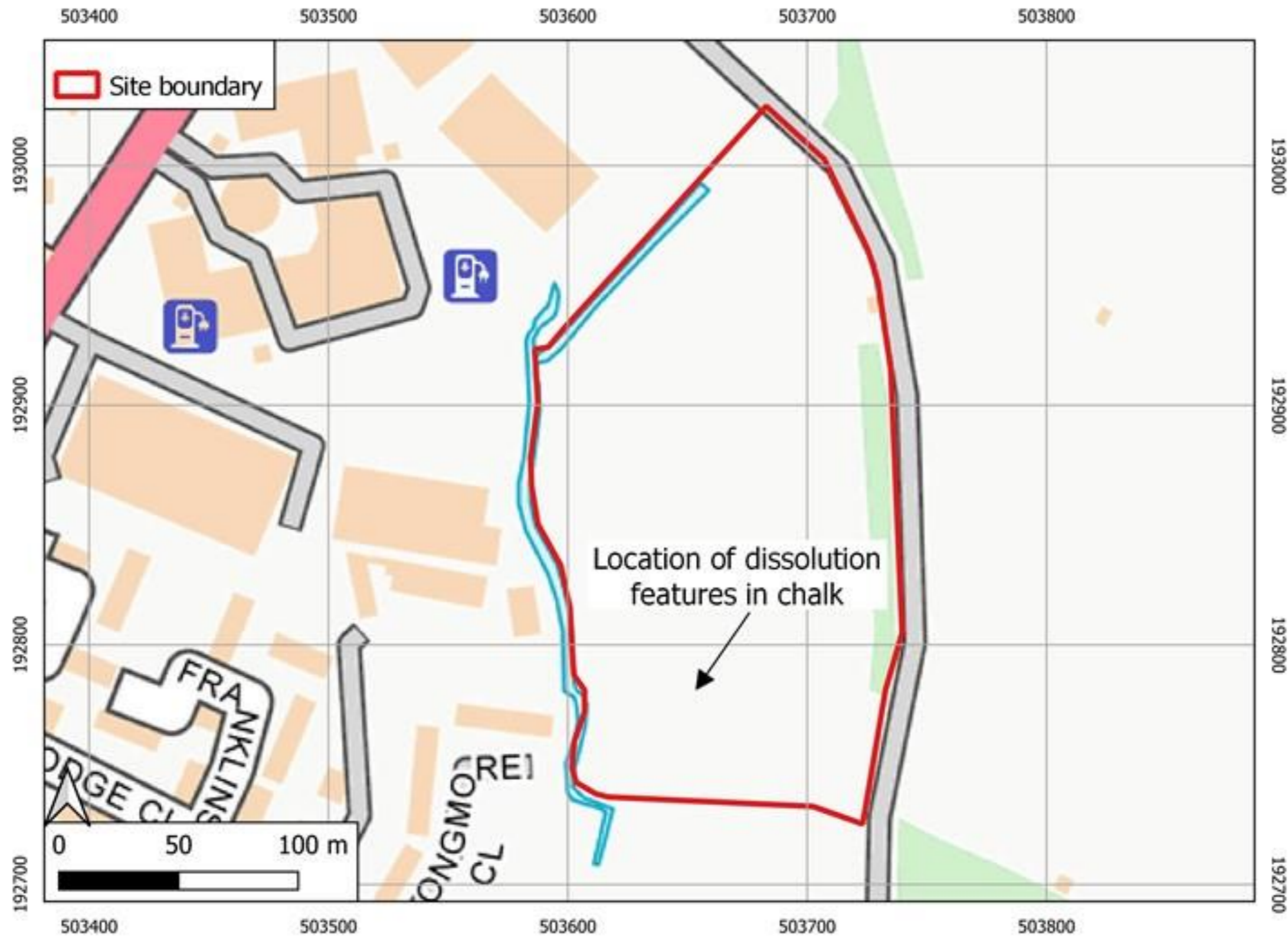


Figure Error! No text of specified style in document..3 Location of the dissolution feature at the site

Contains Ordnance Survey data © Crown copyright and database right 2022



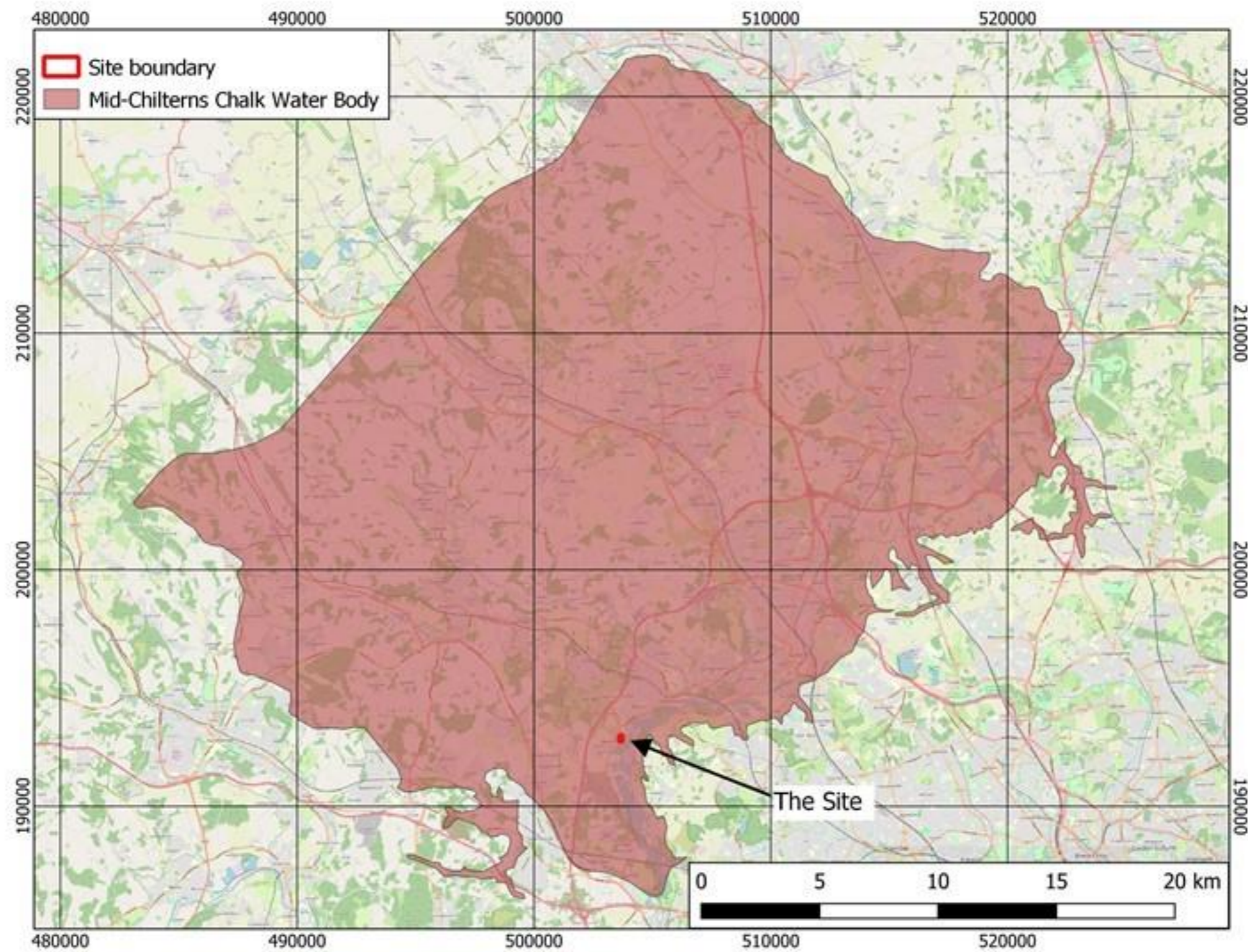


Figure Error! No text of specified style in document..4 Mid-Chilterns Chalk groundwater body

Contains Ordnance Survey data © Crown copyright and database right 2022



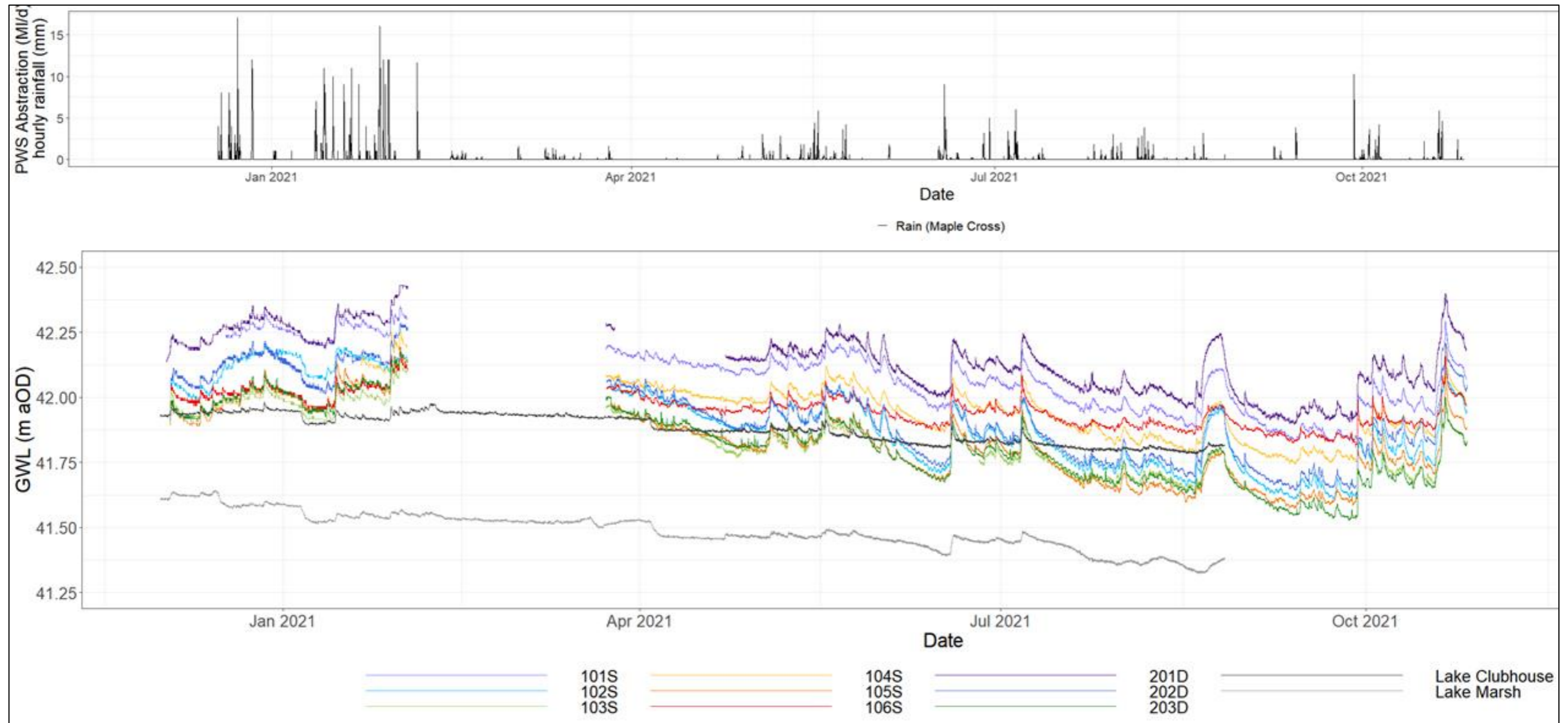


Figure Error! No text of specified style in document..5 Groundwater and lake level monitoring data



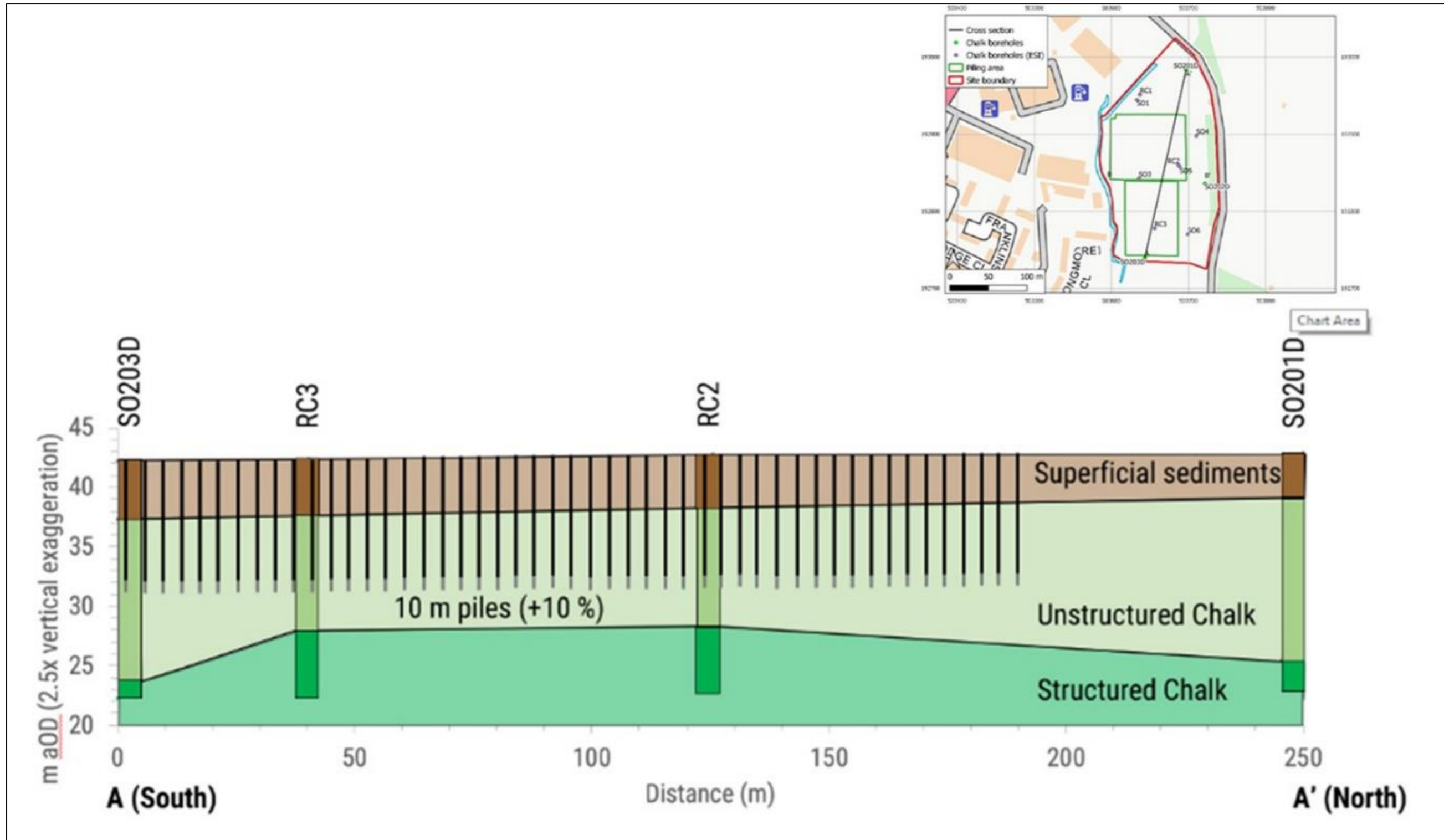


Figure Error! No text of specified style in document..6 Geological cross section

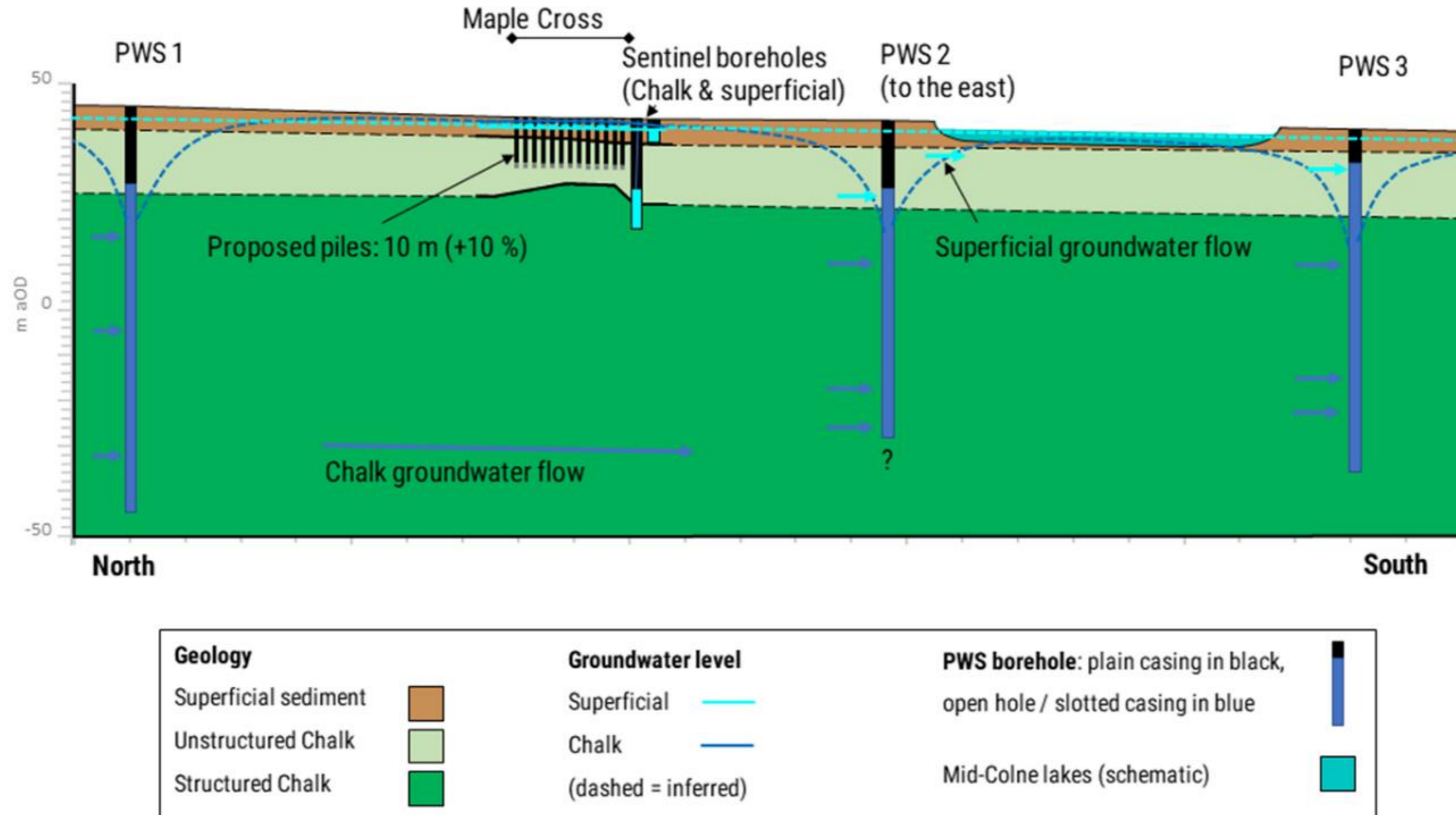


Figure Error! No text of specified style in document..7 Schematic cross section showing PWS abstractions

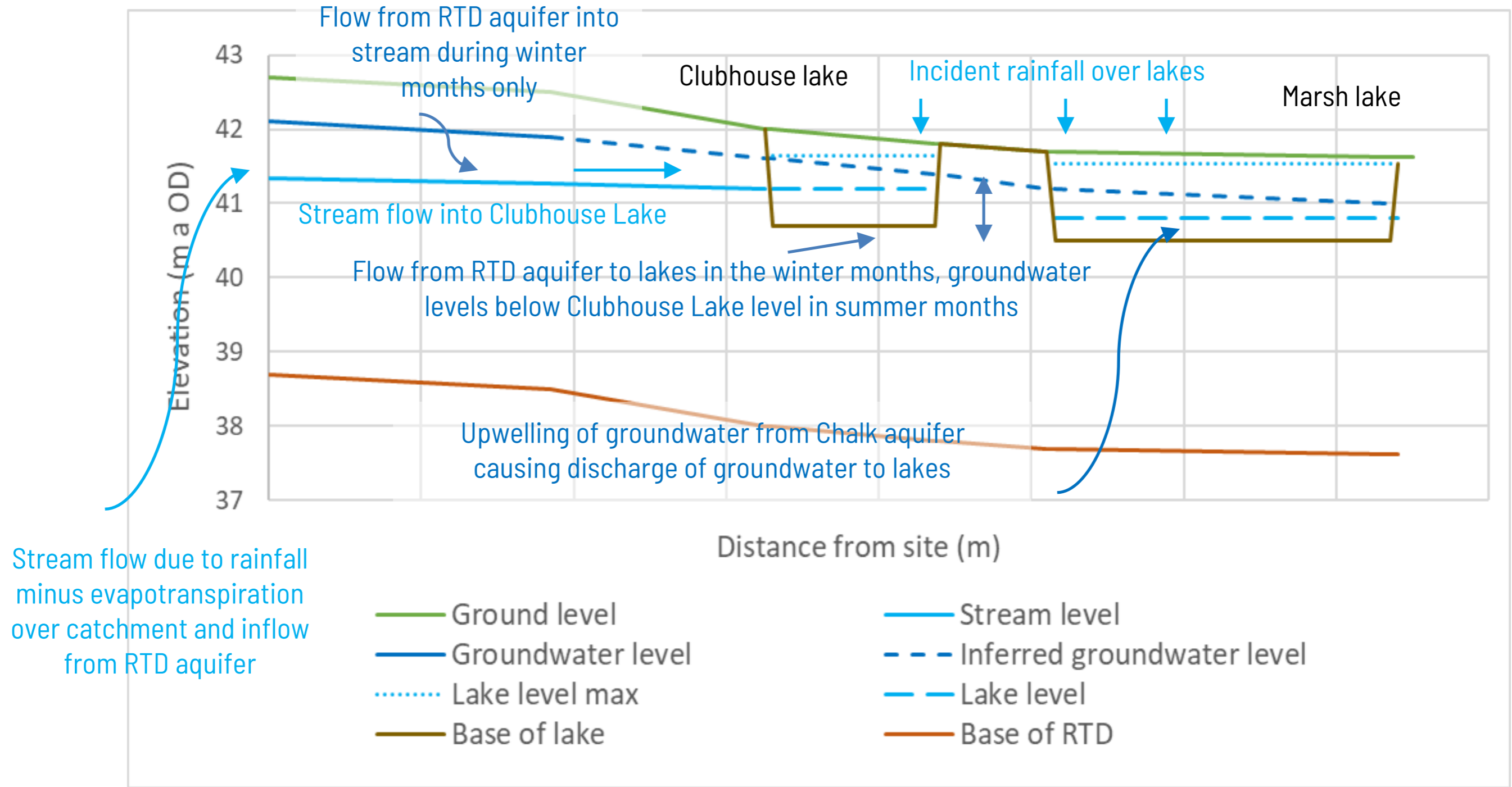


Figure Error! No text of specified style in document..8 Conceptual model of Maple Lodge nature reserve