

This drawing is © C4 Projects and is not to be copied, reproduced or re-distributed either in whole or in part without the prior written permission of the originator.
The originator shall have no responsibility for any liability, loss, cost, damage or expense arising from or relating to any use of this document other than for its intended purpose on this project.
This drawing shall be read in conjunction with all other relevant drawings, specifications and associated documentation. Any discrepancies, errors or omissions are to be reported to the originator before proceeding with work.
All dimensions are to be checked on site by the contractor prior to proceeding with any work. This drawing shall not be scaled to ascertain any dimensions, work to figured dimensions only.

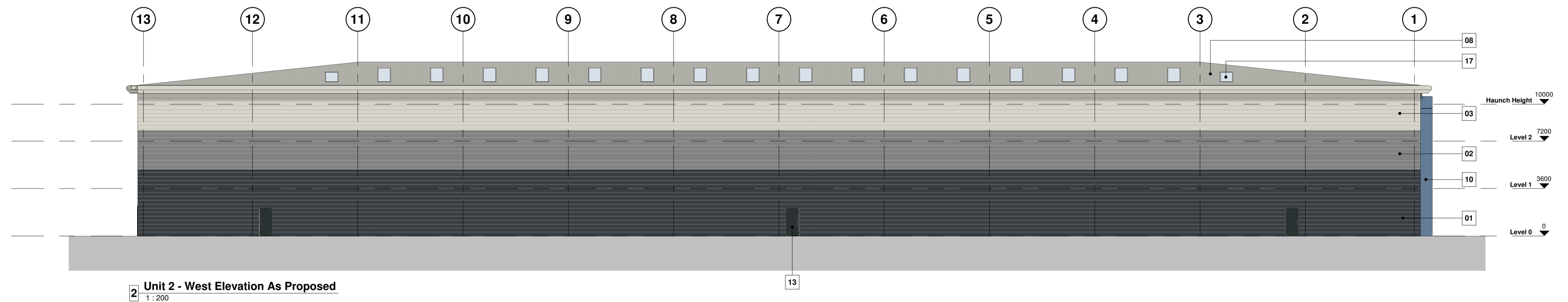
DISCLAIMER
When this drawing is issued in CAD, it is an uncontrolled version issued for information only, to enable the recipient to prepare their own documents/drawings for which they are solely responsible.

SOFTWARE INTEROPERABILITY
C4 Projects prepared this drawing using Autodesk REVIT Architecture.
C4 Projects does not accept liability for any loss or degradation of any information held in the drawing resulting from the translation from the original file format to any other file format or from the recipient's reading of it in any other programme.

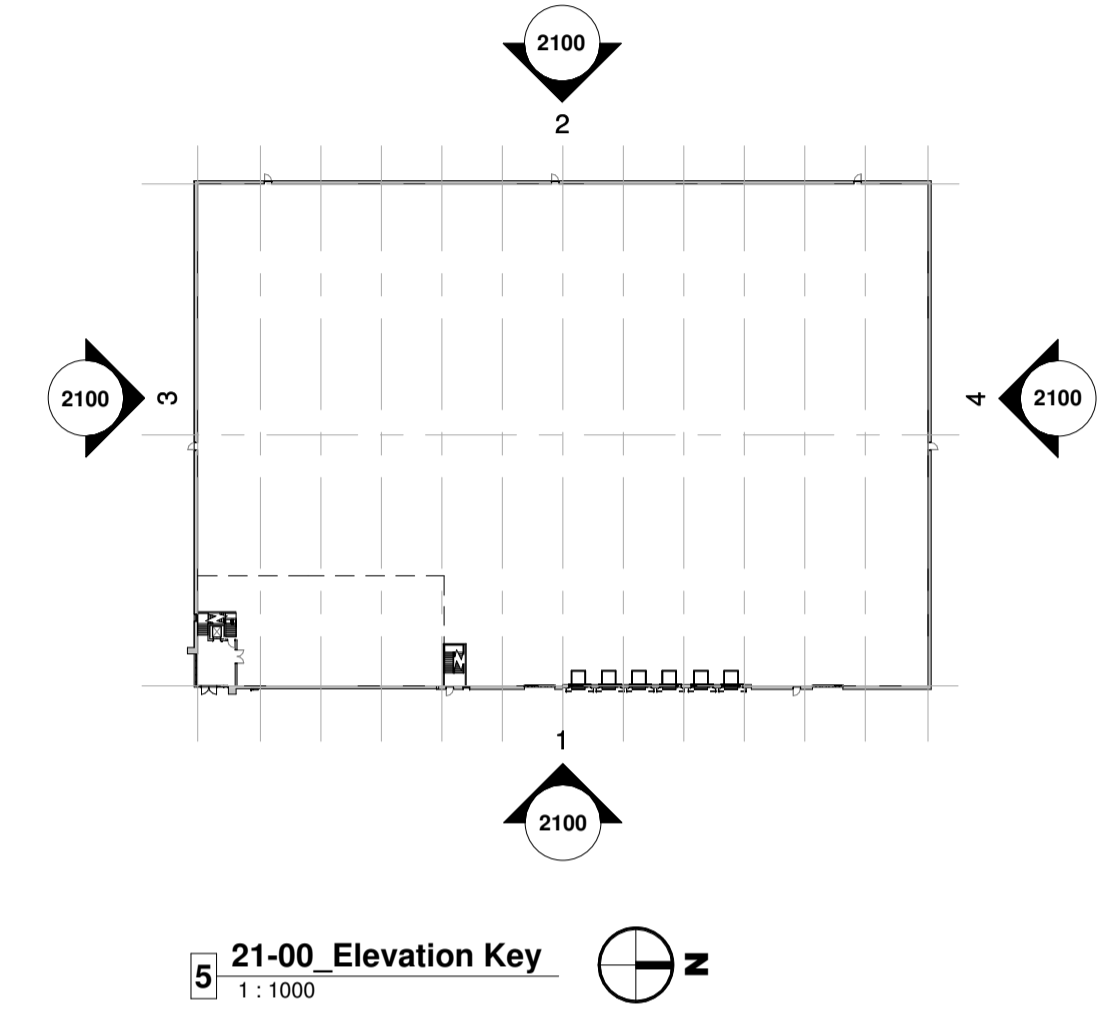
Hazard Identification		
ref	hazard	date



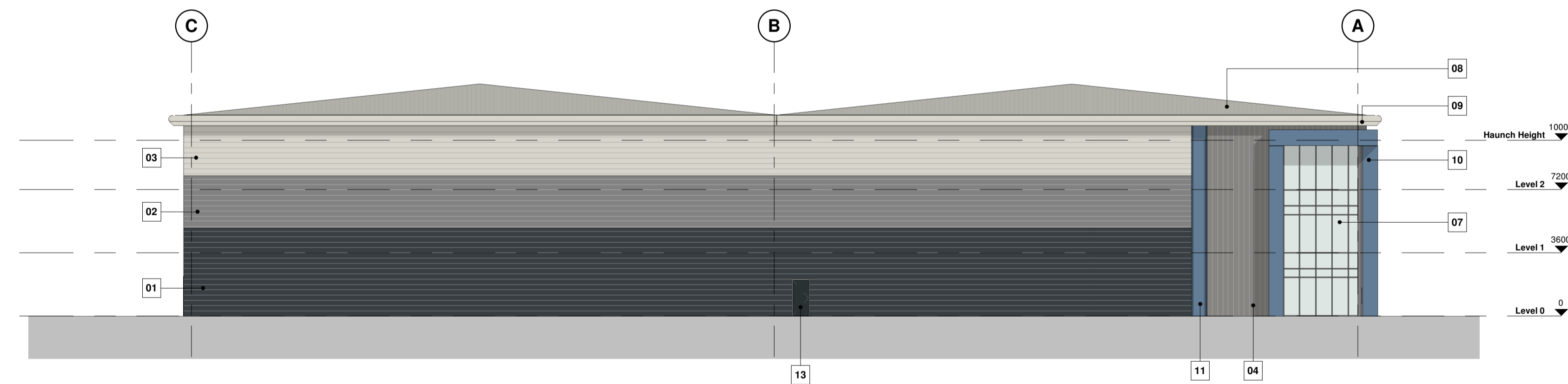
1 Unit 2 - East Elevation As Proposed
1 : 200



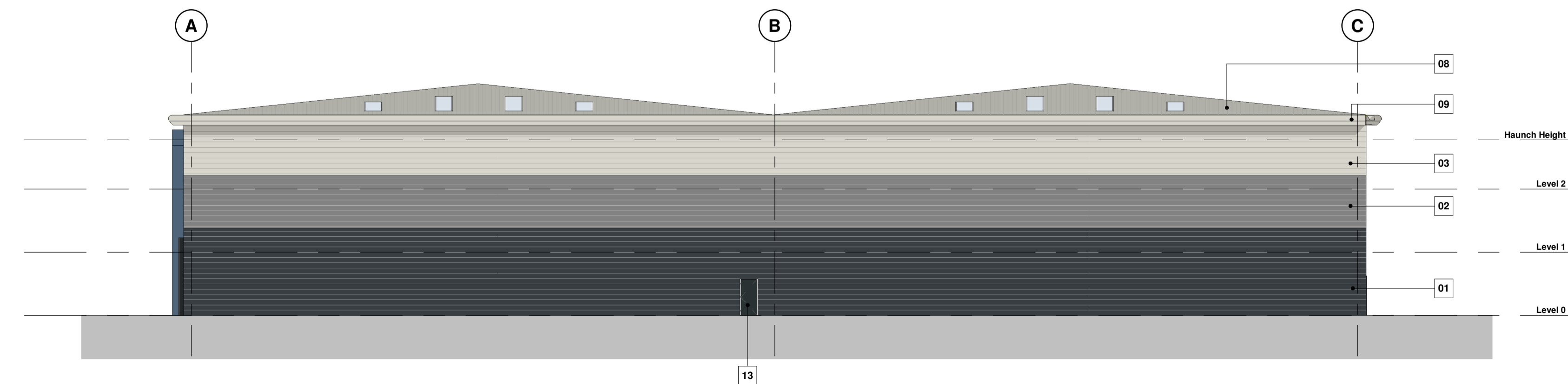
2 Unit 2 - West Elevation As Proposed
1 : 200



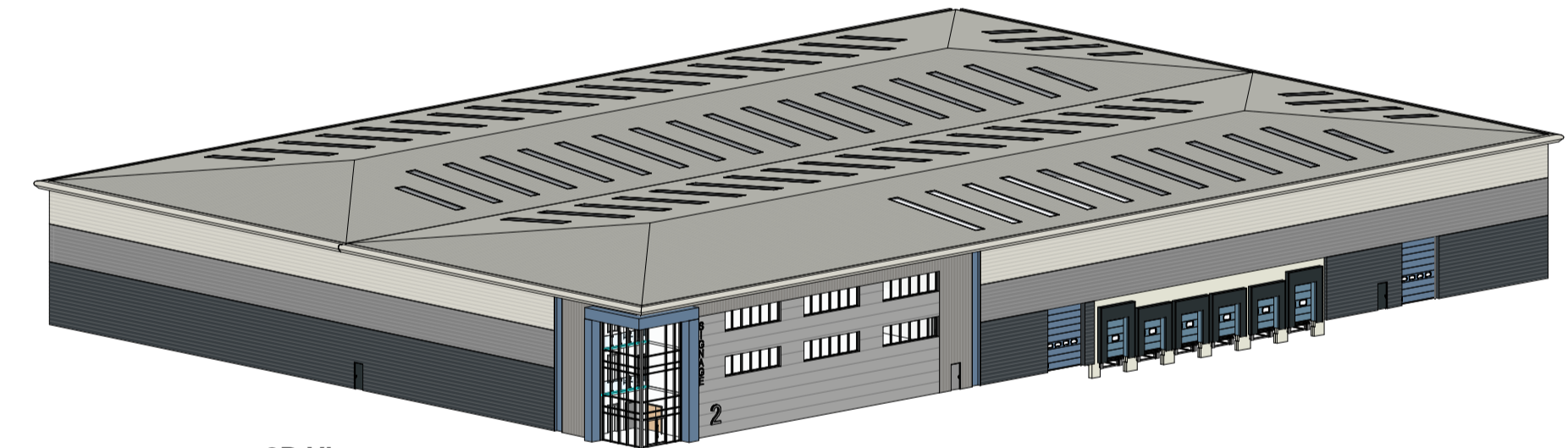
5 21-00 Elevation Key
1 : 1000



3 Unit 2 - South Elevation As Proposed
1 : 200



4 Unit 2 - North Elevation As Proposed
1 : 200



6 3D View

Materials Key	
Ref.	Description
01	WALL TYPE 1 - Built-up metal cladding (twin skinned, insulated) system, horizontal Half Round profile - Anthracite (RAL 7016).
02	WALL TYPE 2 - Built-up metal cladding (twin skinned, insulated) system, horizontal Half Round profile - Merlin (BS 18B25) or Pure Grey (RAL 000 55 00).
03	WALL TYPE 3 - Built-up metal cladding (twin skinned, insulated) system, horizontal Half Round profile - Hamlet (RAL 9002).
04	WALL TYPE 4 - Built-up metal cladding (twin skinned, insulated) system, vertical trapezoidal profile - Metallic - Orion (RAL 9007).
05	WALL TYPE 5 - Metal faced composite (sandwich) panel cladding system, micro-rib / satin-line profile - Metallic - Sirius (RAL 9006).
06	WALL TYPE 6 - Precast Concrete (twin skinned, insulated) system, to loading docks.
07	WALL TYPE 7 - Aluminium Curtain Wall stick frame system, PPC metallic finish, Orion (RAL 9007) - double glazed infill units (solar control) - integral glazed entrance doorset.
08	ROOF TYPE 1 - Metal faced composite (sandwich) interlocking cladding panel system, trapezoidal profile - Merlin Grey (BS 18B25) or GWG (BS 10A05) with 15% in-plane rooflights.
09	Feature Eaves Banding - stepped profiled eaves with integral bullnose gutter arrangement - PPC Aluminium - Hamlet (RAL 9002).
10	Feature Portico Surround - Aluminium Rainscreen folded panels to approved detail on support carrier system - PPC Denim (RAL 5014).
11	Feature Vertical Recess - Aluminium Sheeting with splayed profile edges to approved detail on support carrier system - PPC Denim (RAL 5014).
12	Strip Glazing - Window or Curtain Wall frame section, PPC metallic finish, Sirius (RAL 9006) to match cladding - complete with double glazed infill units (solar control)
13	Personnel Access / Escape doorset - Galvanised Steel ppc finish, colour matched to cladding location, anti-vandal ironmongery.
14	Operational Door - Level Access (4m x 5m high), Sectional insulated shutter, Plastisol coated finish in Denim (RAL 5014).
15	Operational Door - Dock levellers, Standard Bay (2.86m x 3.0m high), Sectional insulated shutter, Plastisol coated finish in Denim (RAL 5014) c/w shelter curtains PVC black.
16	Operational Door - Dock levellers, Double Deck Bay (2.86m x 3.6m high), Sectional insulated shutter, Plastisol coated finish in Denim (RAL 5014) c/w shelter curtains PVC black.
17	In-plane rooflights integral to compositing system (refer to Roof Plan for size/location).

P4 Planning Re-submission	BC 22.12.20	GE
P3 Annex omitted, haunch height reduced & Cladding bands/gutter colour updated.	JC 17.09.19	DC
P2 Information updates in line with comments received.	PC 14.06.19	DC / NR
P1 Issued for PLANNING. Drawing replaces drawing no. 17019-C4P-V2-E-DR-A-2100-P2-for Planning submission purpose.	PC 12.06.19	DC / NR



Project Management • Architecture • Building Surveying • Cost Consultancy

Client
BCL (Maple Cross) LLP

Project
Land at Maple Lodge Close, Maple Cross, Rickmansworth

Drawing Title
Unit 2 - Elevations As Proposed

Status Purpose of Issue
S4 SUITABLE FOR STAGE APPROVAL

Drawn by PC **Created** 07.06.2019
C4 Job no. 17019 **Scale** As indicated @ A1

Dwg no. 17019-C4P-B2-ZZ-DR-A-2100 **Rev** P4