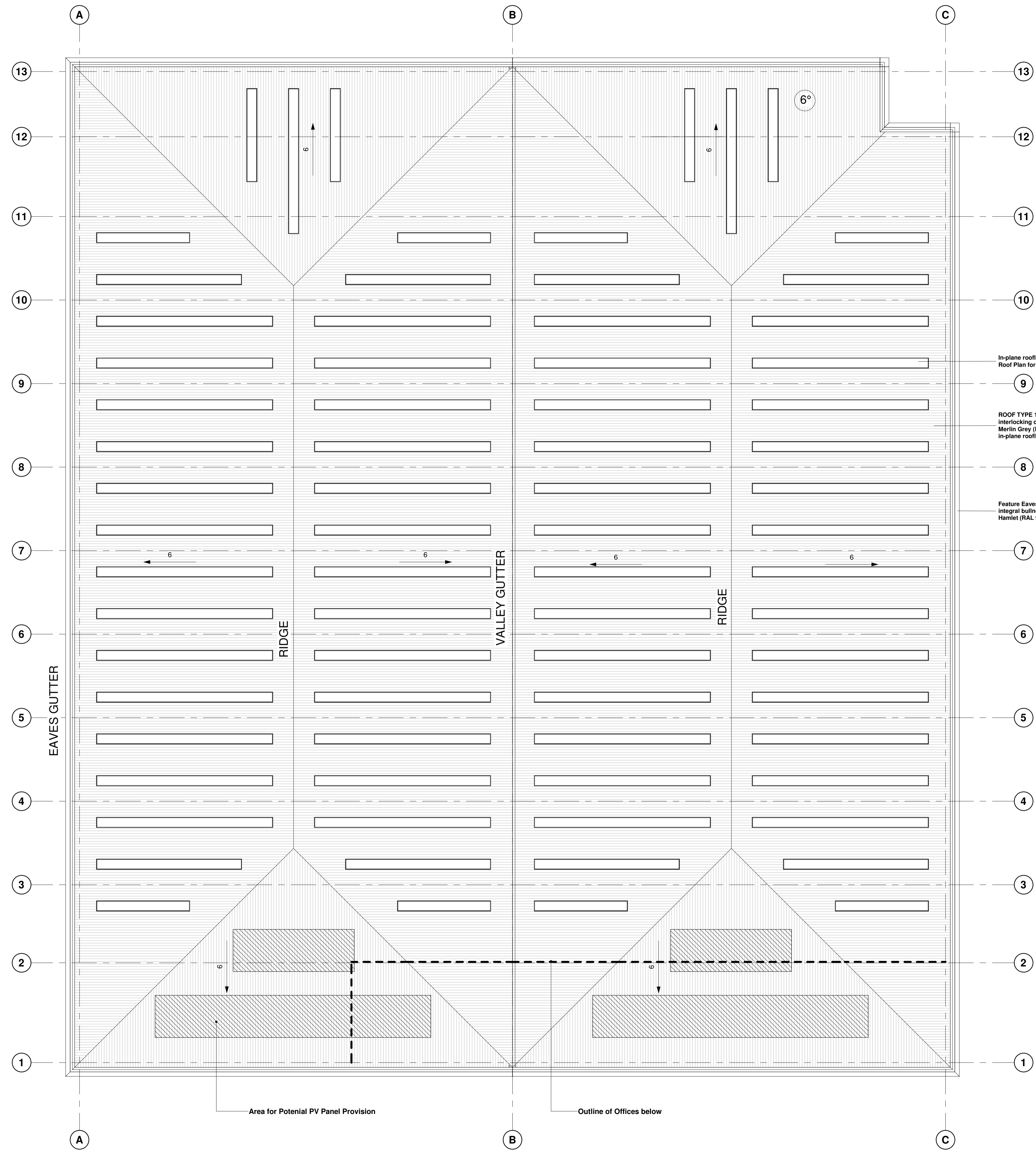


This drawing is © C4 Projects and is not to be copied, reproduced or re-distributed either in whole or in part without the prior written permission of the originator.
 The originator shall have no responsibility for any liability, loss, cost, damage or expense arising from or relating to any use of this document other than for its intended purpose on this project.
 This drawing shall be read in conjunction with all other relevant drawings, specifications and associated documentation. Any discrepancies, errors or omissions are to be reported to the originator before proceeding with work.
 All dimensions are to be checked on site by the contractor prior to proceeding with any work. This drawing shall not be scaled to ascertain any dimensions, work to figured dimensions only.
DISCLAIMER
 When this drawing is issued in CAD, it is an uncontrolled version issued for information only. To enable the recipient to prepare their own documents/drawings for which they are solely responsible.
SOFTWARE INTEROPERABILITY
 C4 Projects prepared this drawing using Autodesk REVIT Architecture.
 C4 Projects does not accept liability for any loss or degradation of any information held in the drawing resulting from the translation from the original file format to any other file format or from the recipient's reading of it in any other programme.

Hazard Identification		
ref	hazard	date



In-plane rooflights integral to composing system (refer to Roof Plan for size/location).

ROOF TYPE 1 - Metal faced composite (sandwich) interlocking cladding panel system, trapezoidal profile - Merlin Grey (BS 18B25) or GWG (BS 10A05) with 15% in-plane rooflights.

Feature Eaves Banding - stepped profiled eaves with integral bullnose gutter arrangement - PPC Aluminium - Hamlet (RAL 9002).

EAVES GUTTER

RIDGE

VALLEY GUTTER

RIDGE

Area for Potential PV Panel Provision

Outline of Offices below

P4	Planning Re-submission	BC	22.12.20	GE
P3	Information updates in line with comments received.	PC	14.06.19	DC / NR
P2	Issued for PLANNING.	PC	12.06.19	DC / NR
P1	Finalised and issued for Comments.	PC	07.06.19	DC

C4 Projects
 Quayside, Widespool Business Park, Stockton Heath, WAA GHL
 t: 01925 751 852
 e: info@c4projects.co.uk
 www.c4projects.co.uk
 Project Management • Architecture • Building Surveying • Cost Consultancy

Client
 BCL (Maple Cross) LLP

Project
 MX Park
 Maple Cross, Rickmansworth

Drawing Title
 Unit 1 - Proposed Roof Plan

Status Purpose of Issue
S4 SUITABLE FOR STAGE APPROVAL

Drawn by	BC	Created	07.06.2019
C4 Job no.	17019	Scale	1:200 @ A1

Dwg no.	Rev
17019-C4P-B1-R-DR-A-2001	P4