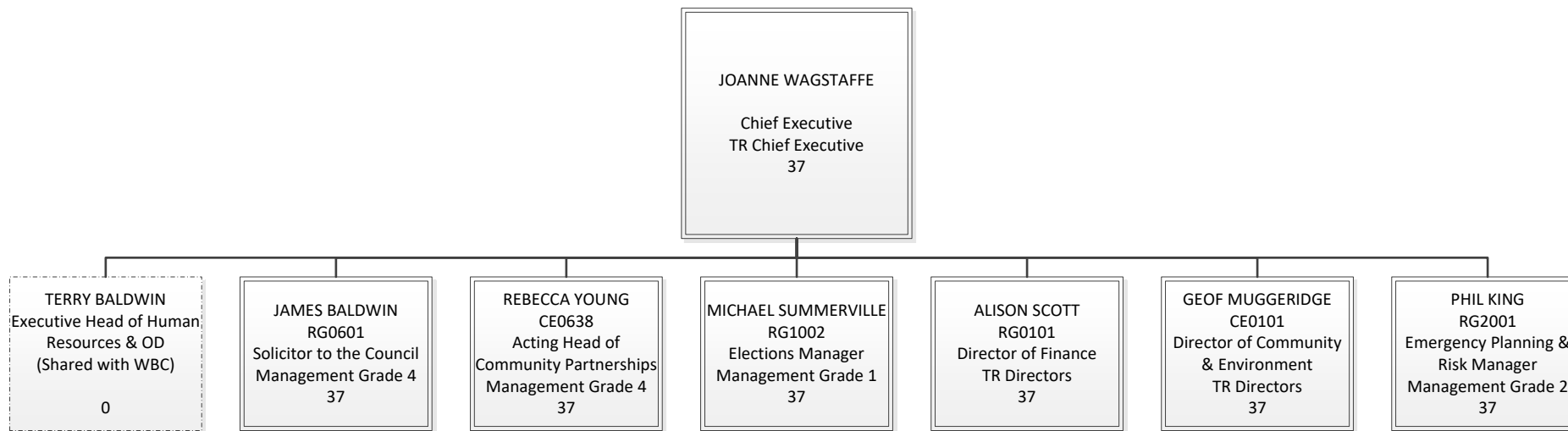


Three Rivers District Council

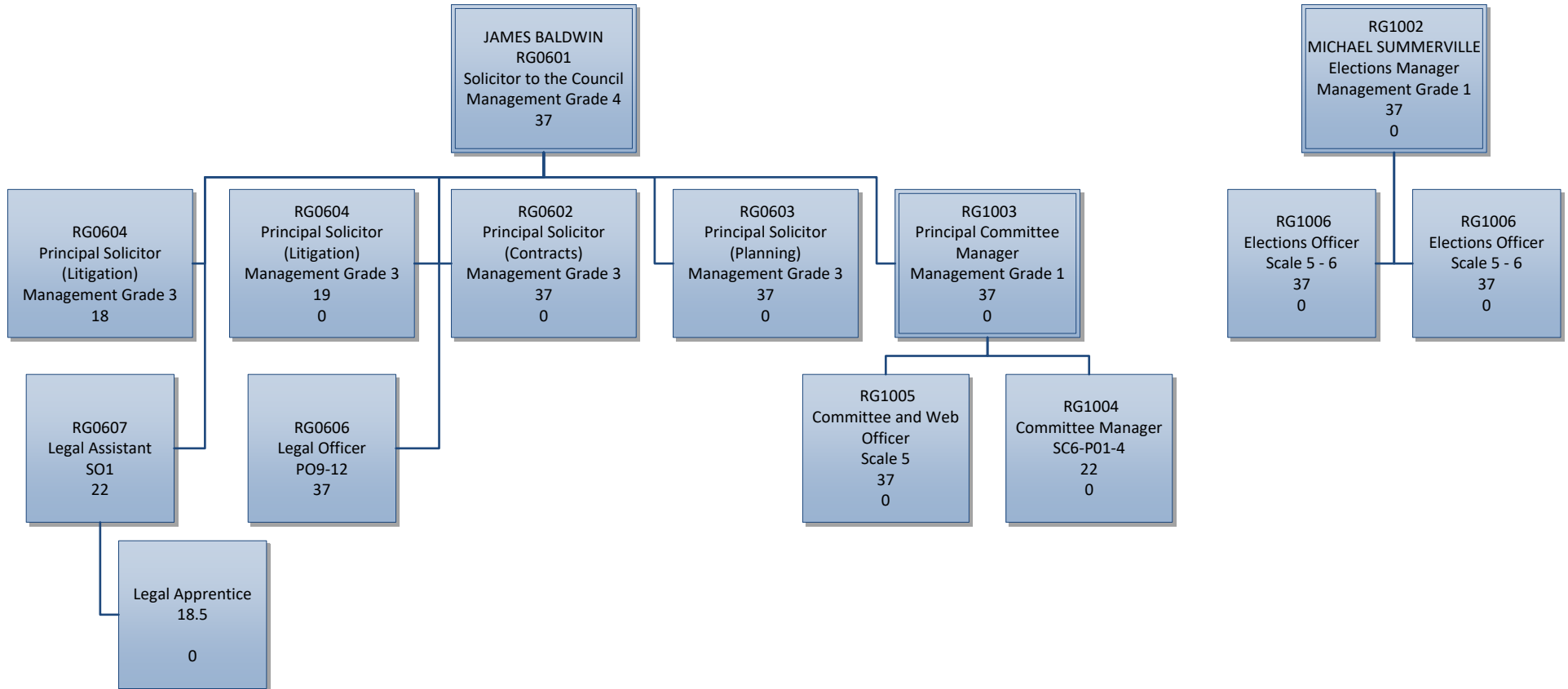


Human Resources and ICT

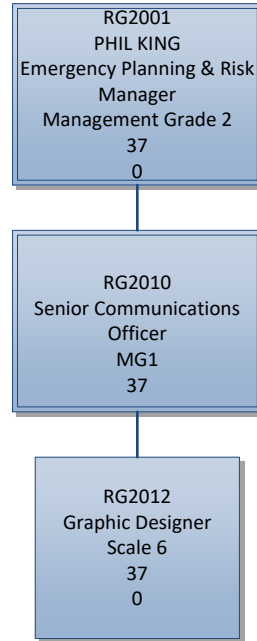
Watford Borough Council is the Lead Authority for the shared Human Resources and ICT services.

The Human Resources and ICT structure charts are published on the Watford Borough Council website.
<http://www.watford.gov.uk>

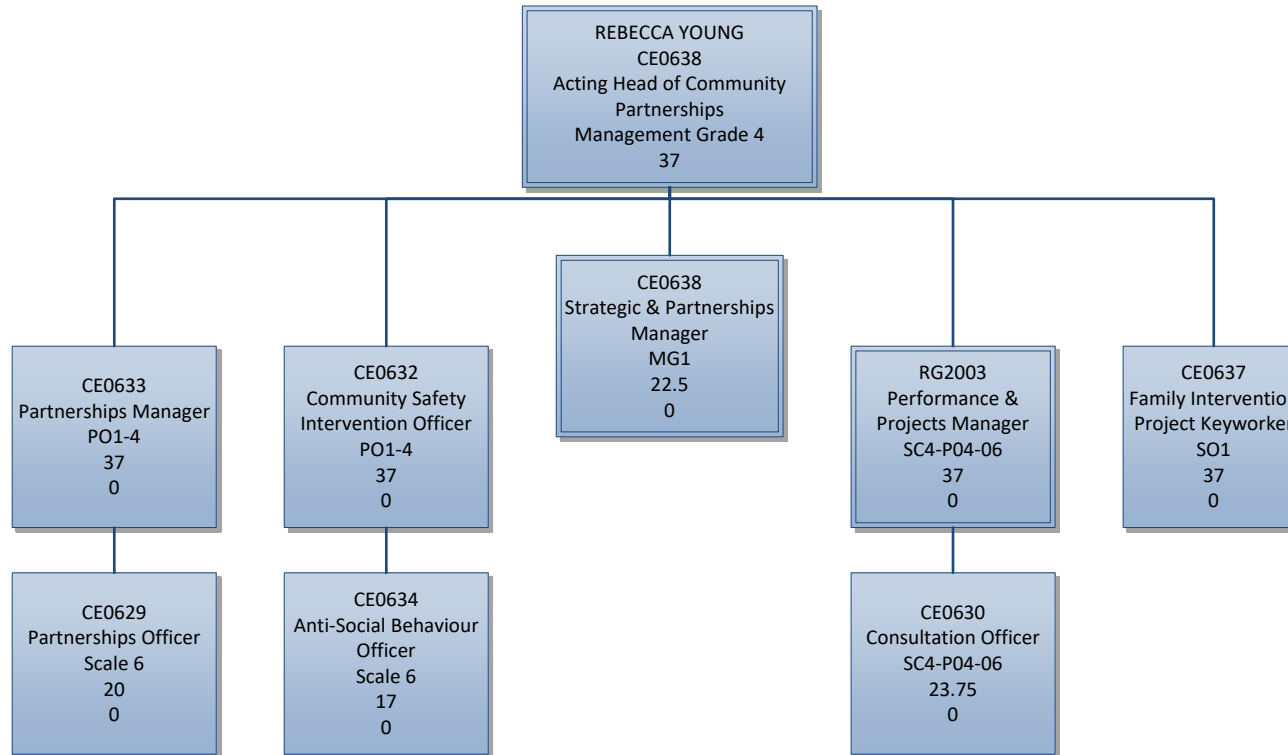
Legal & Democratic Services



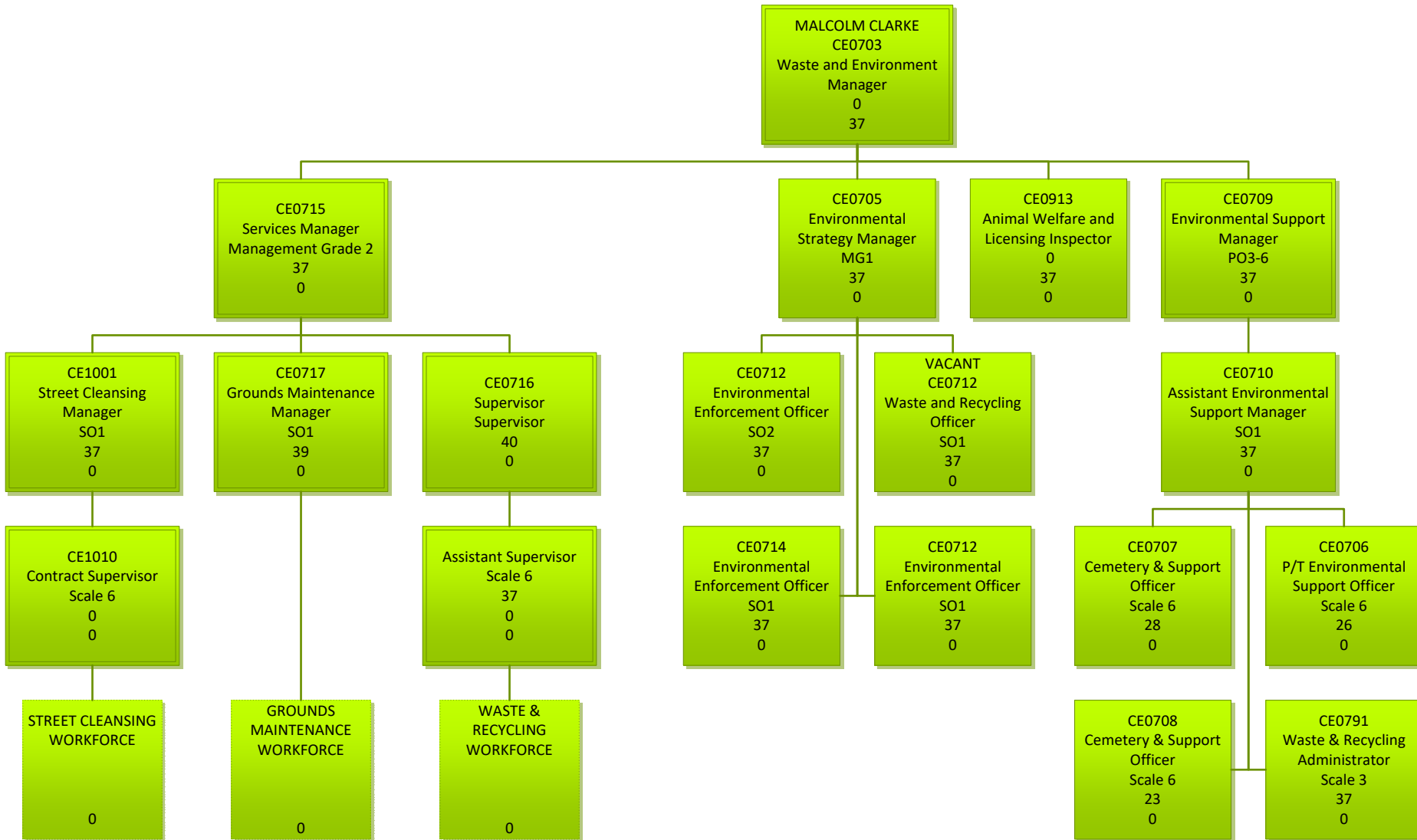
Corporate Services



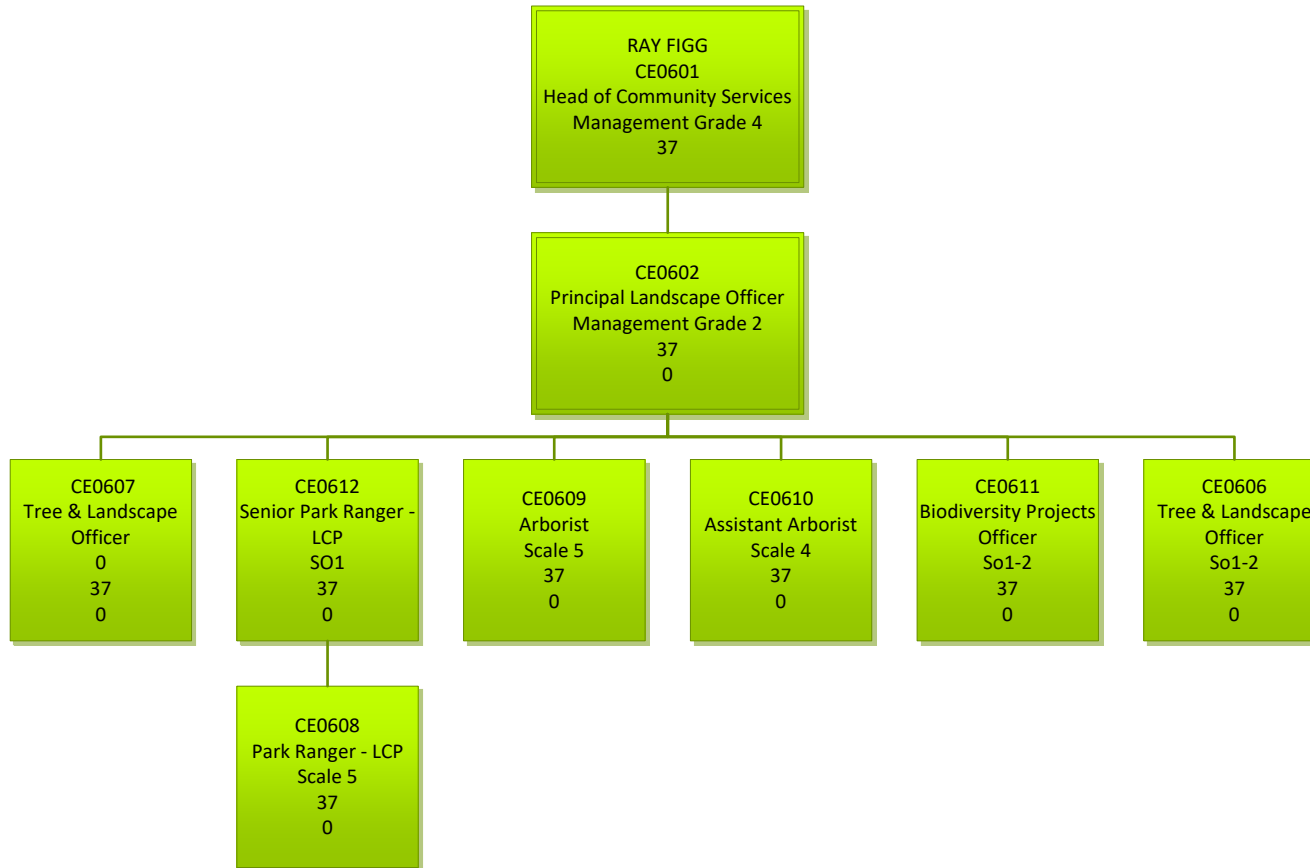
Community Partnerships



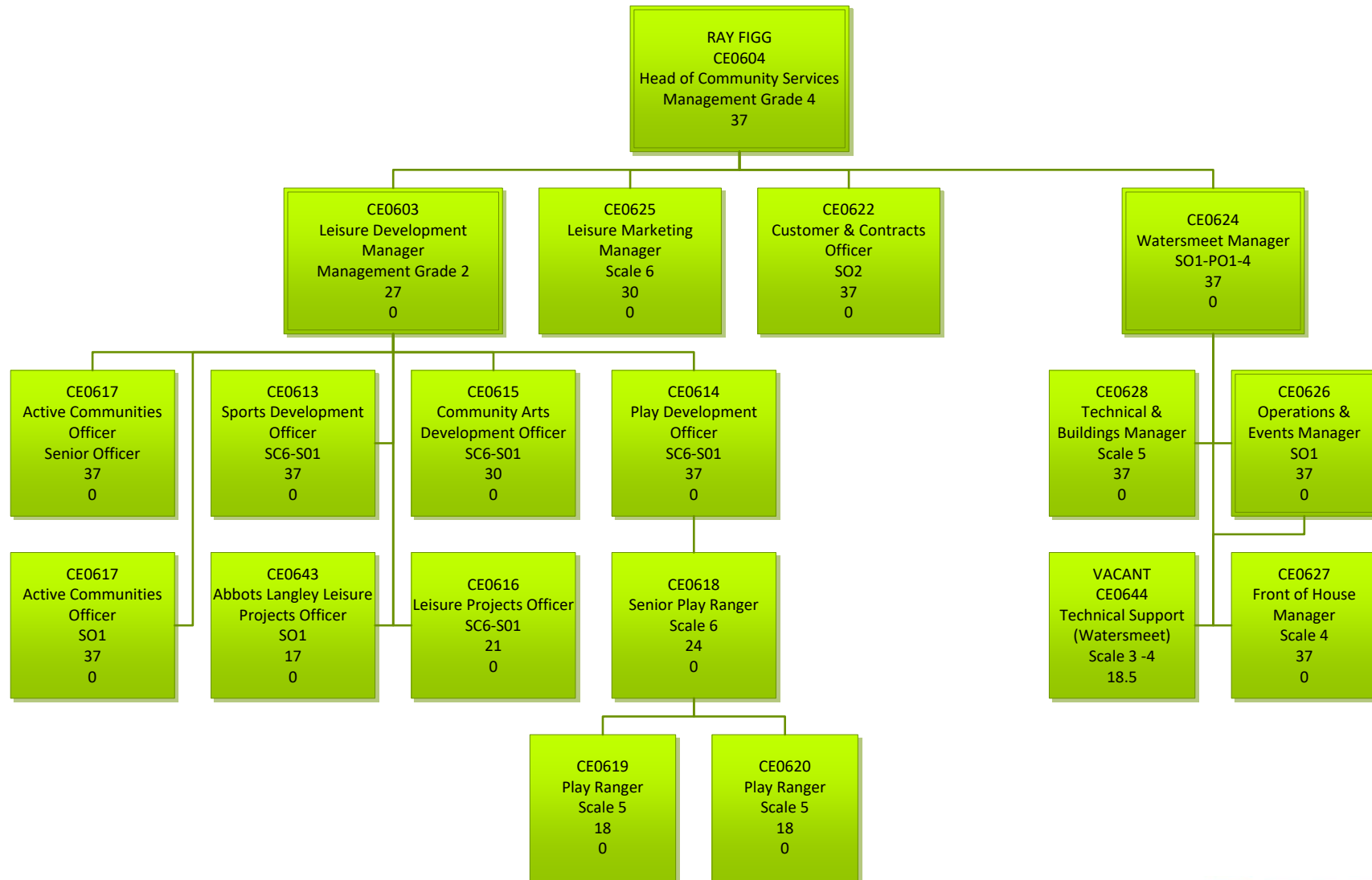
Environmental Services



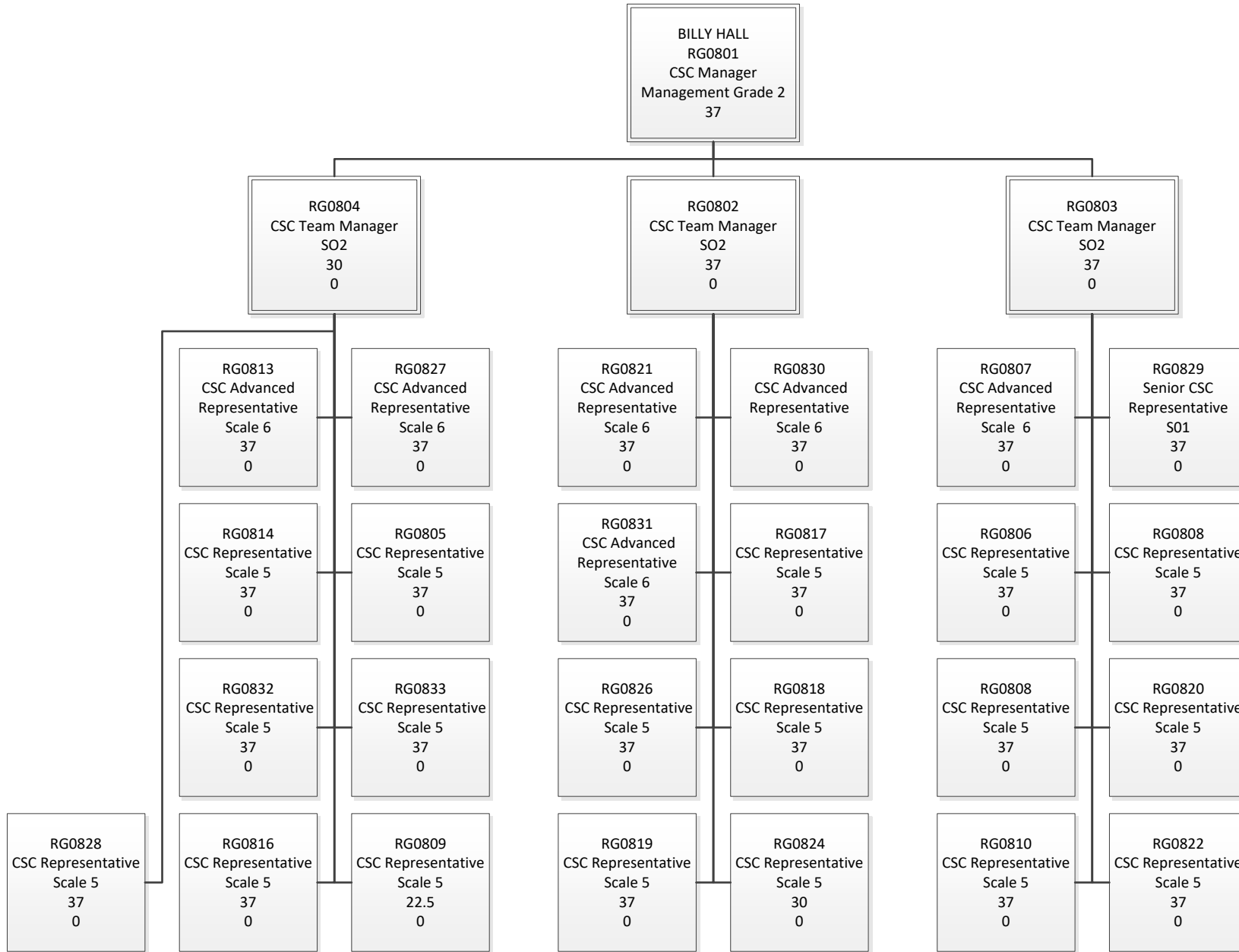
Trees & Landscapes



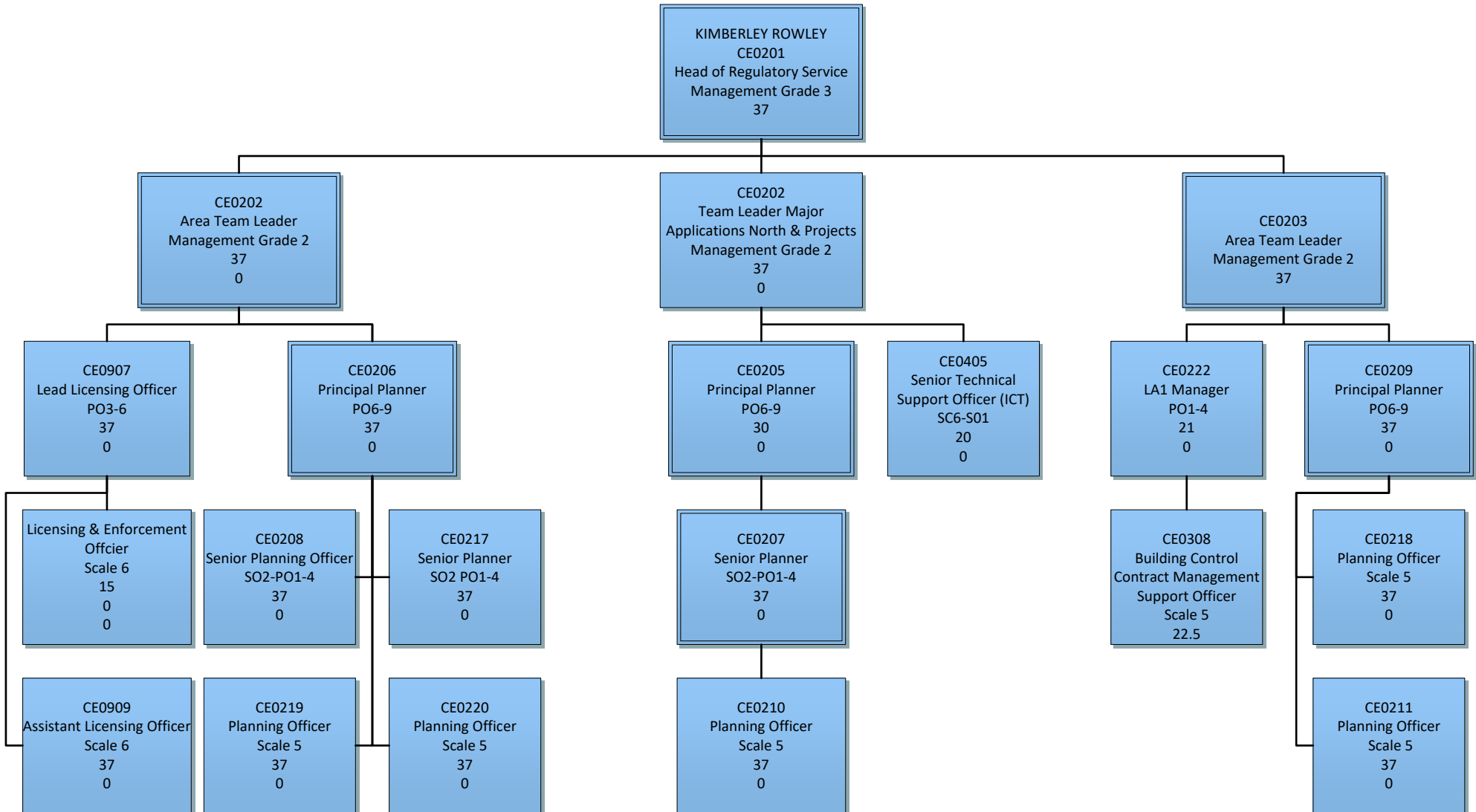
Leisure



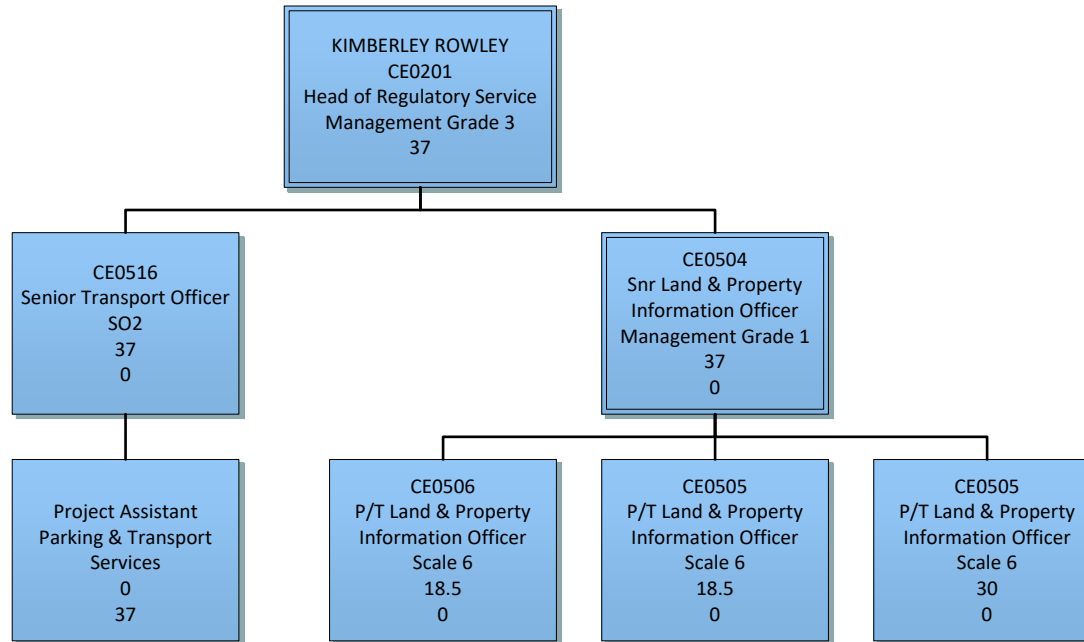
Customer Services



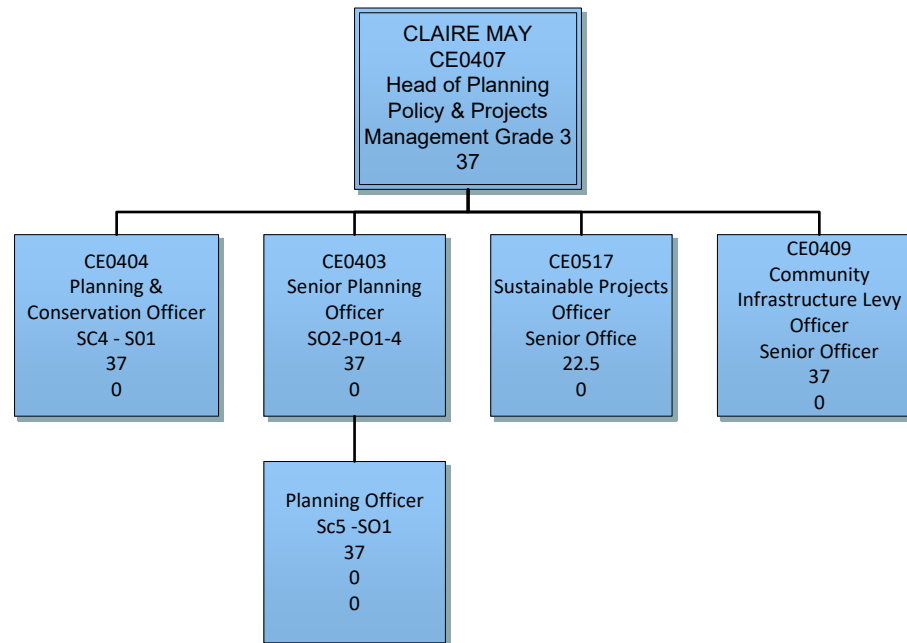
Development Management



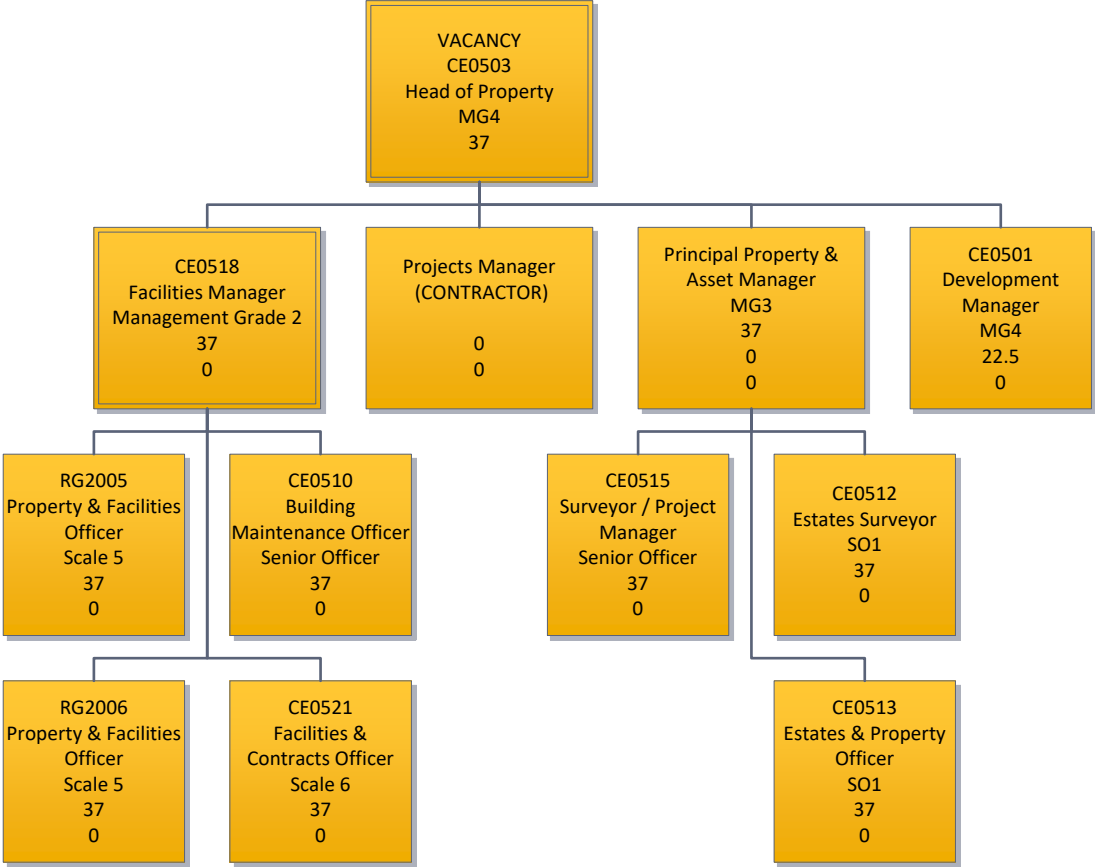
Regulatory Services



Economic & Sustainable Development



Property Services



Services

Y GROUT
04
ing Services
at Grade 3

14
ly Manager
-9

CE0809
Housing Options Manager
PO6-9
37
0

CE08
Private Rented Sector
Coordinator
SO1
37
0

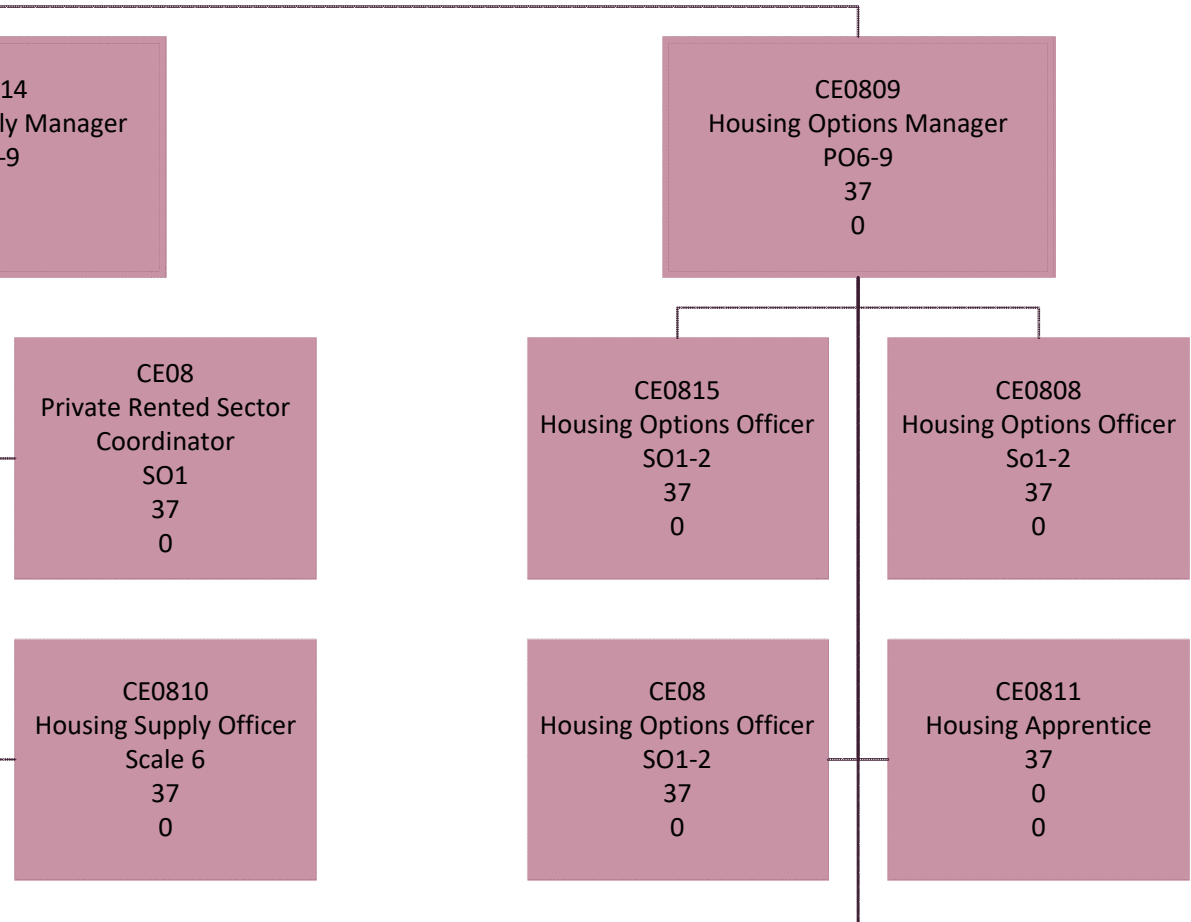
CE0815
Housing Options Officer
SO1-2
37
0

CE0808
Housing Options Officer
So1-2
37
0

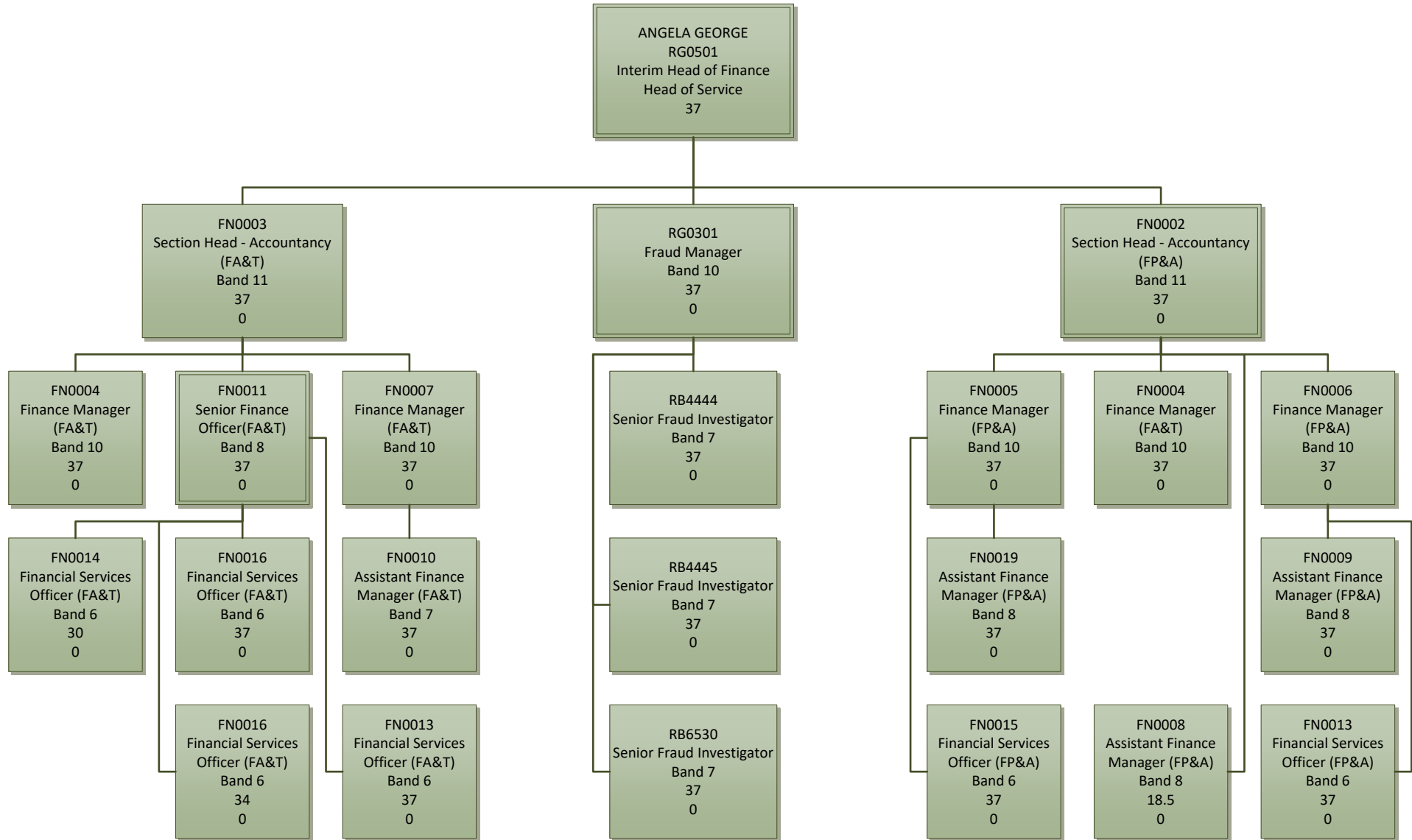
CE0810
Housing Supply Officer
Scale 6
37
0

CE08
Housing Options Officer
SO1-2
37
0

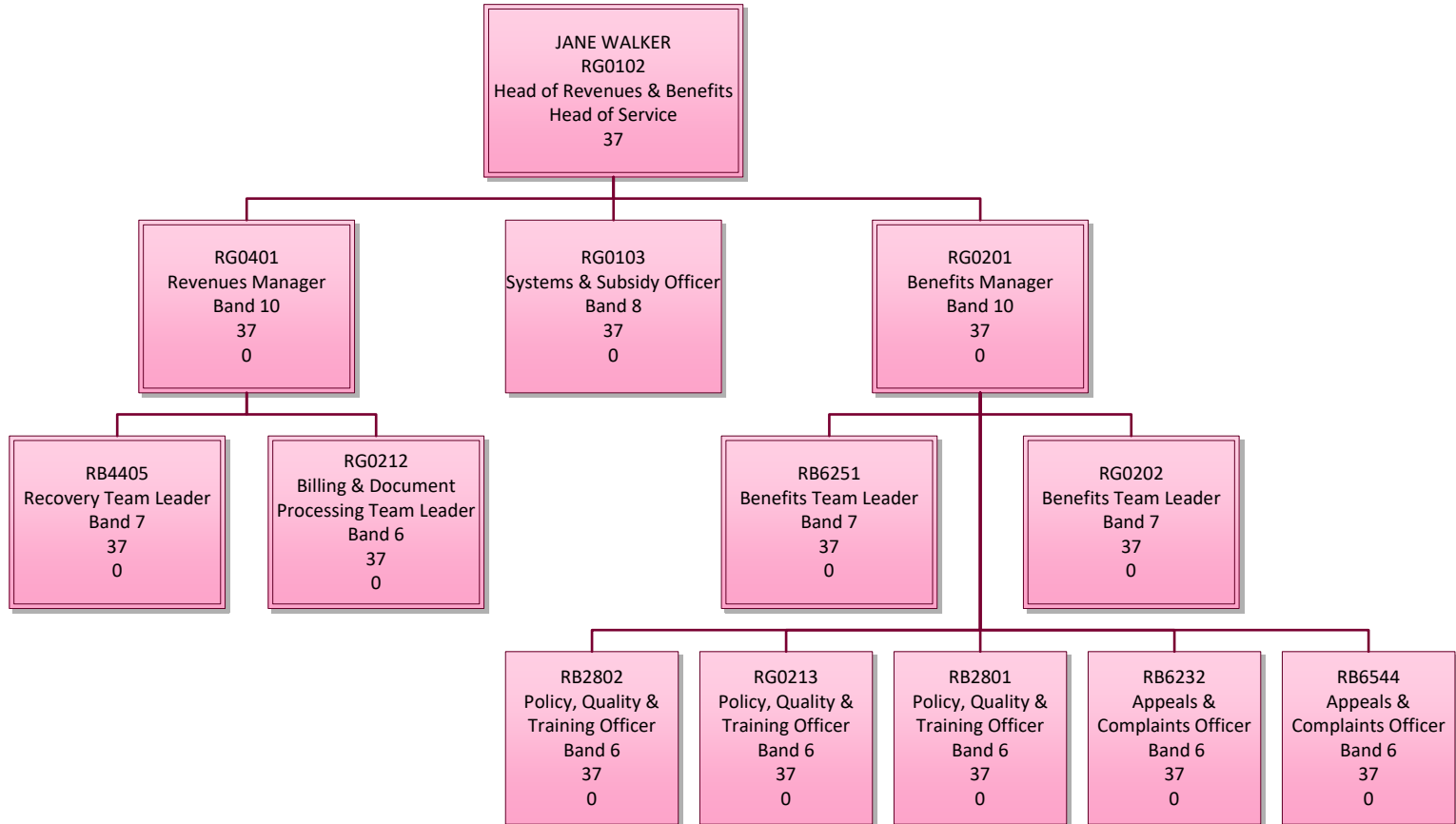
CE0811
Housing Apprentice
37
0
0



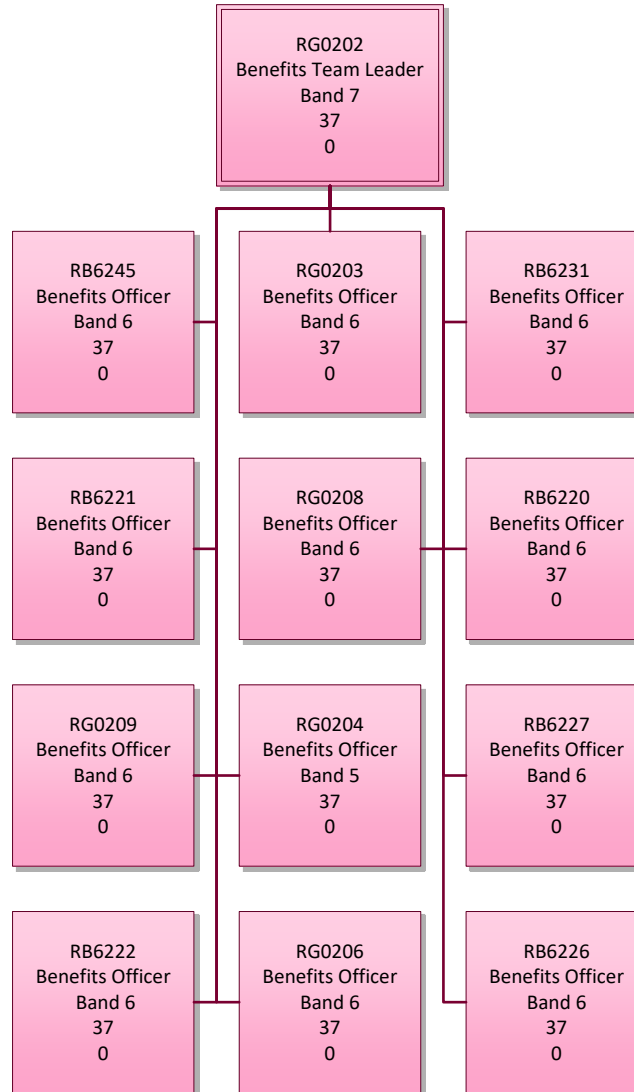
Finance



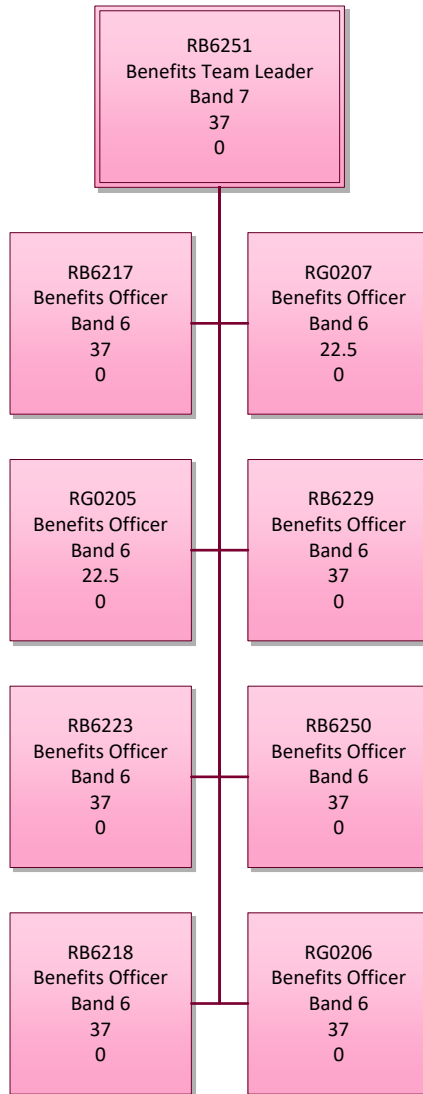
Revenues & Benefits



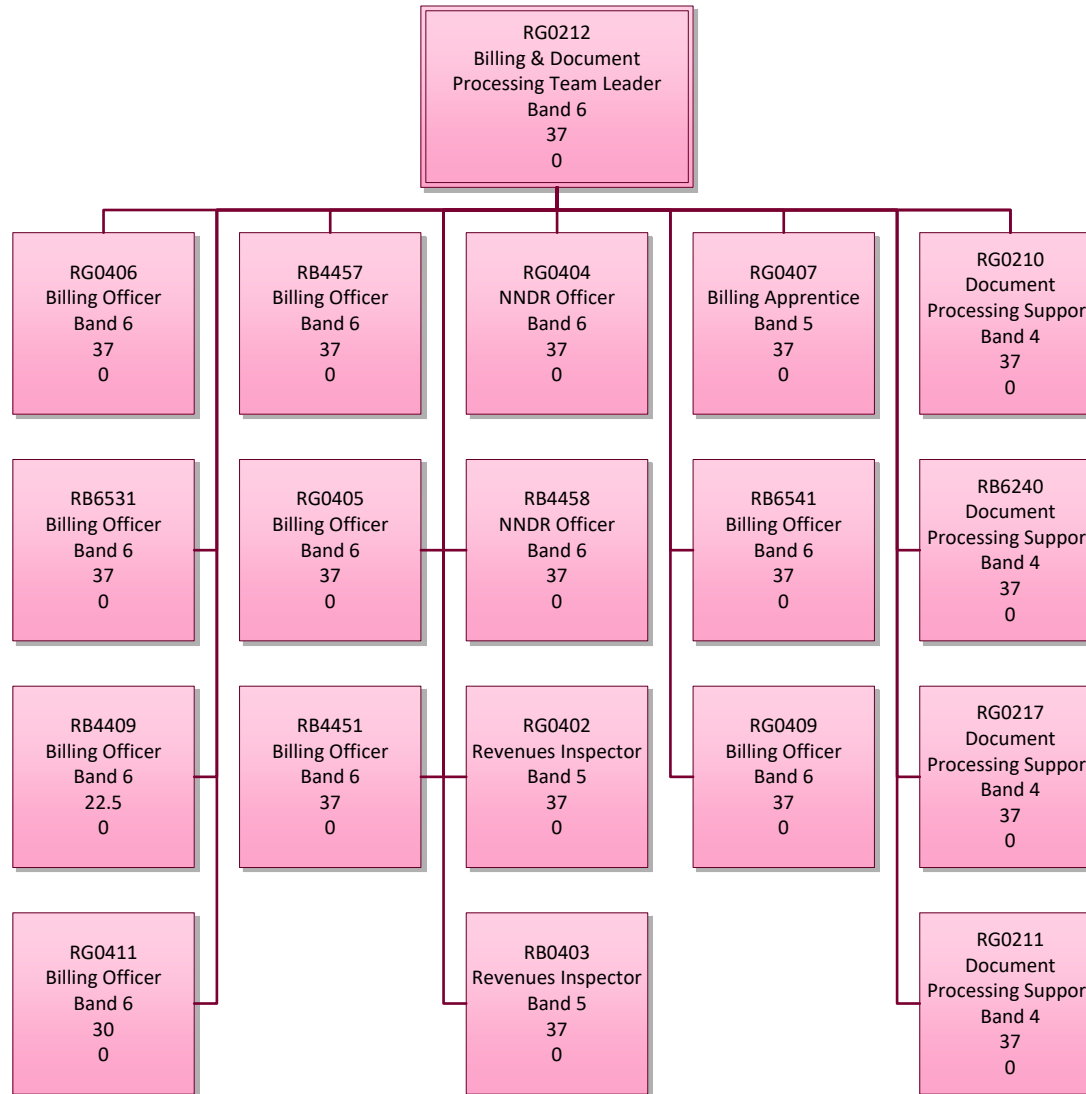
Benefits



Benefits



Billing Team



Recovery Team

