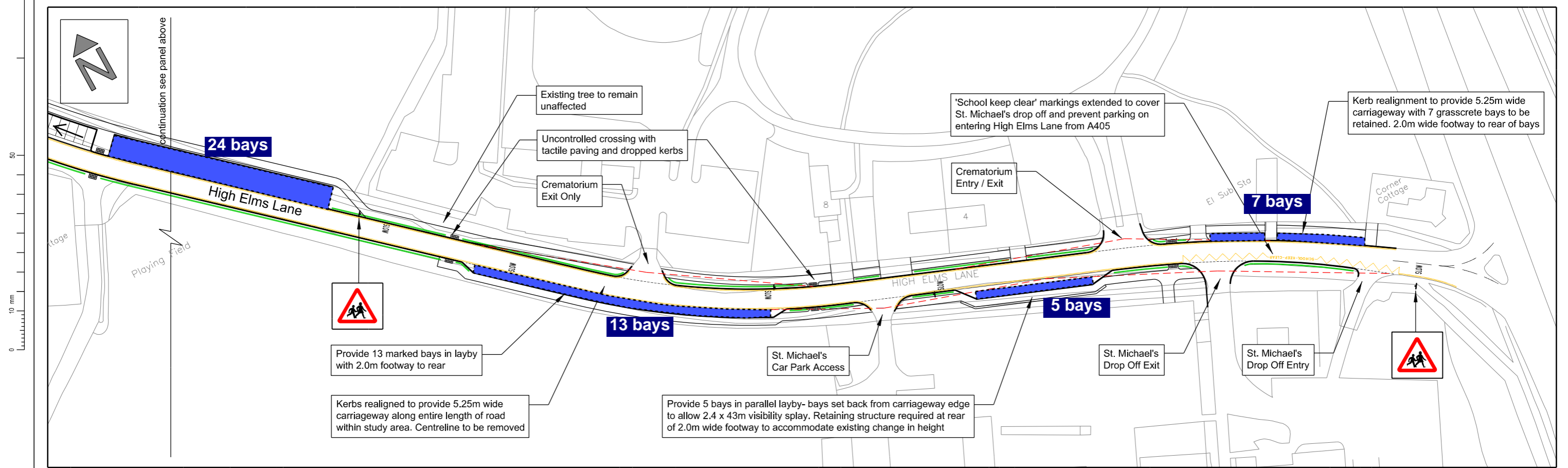
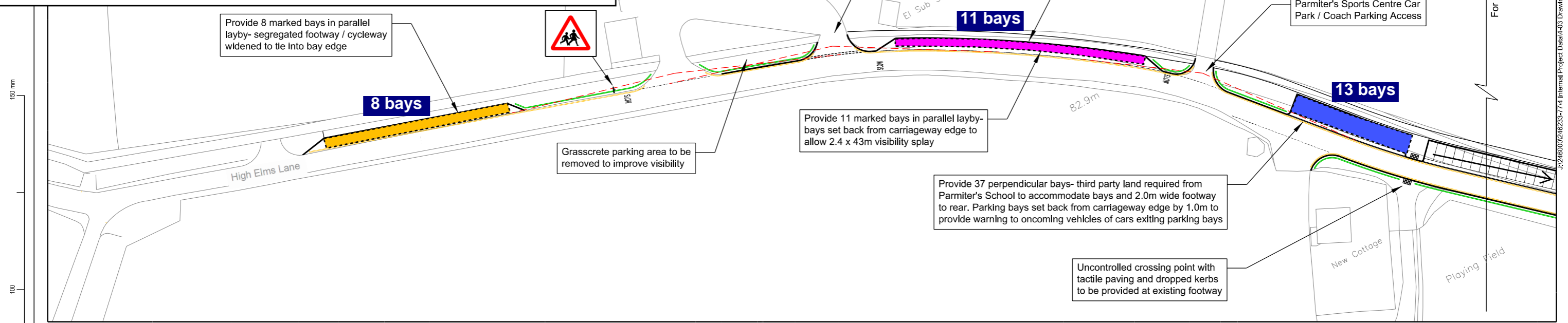


# Proposed Parking bay allocation

- █ **Short-stay & Transfer**  
(Mon - Fri, 20 mins maximum stay, from 8am-9am and 3pm-4pm)  
(Mon - Fri, 90 mins maximum stay, from 9am-3pm)
- █ **Long-stay (Mon-Fri, 8 hours maximum stay, from 8am-4pm)**
- █ **Transfer only (Mon - Fri, 20 mins maximum stay, from 8am-4pm)**



- Key:**
- Low level barrier set back from kerb edge by 450mm
  - Double Yellow Line
  - 2.4 x 43m Visibility Splay

**Notes:**

- Based on 2.4 x 43m visibility splay requirements, 81 parking bays are provided in a combination of parallel, perpendicular and grasscrete bay facilities

Revision	Amendment	Approved	Revision Date
R0	First Issue	PAS	Dec18
R1	Scheme Updated	PAS	Feb19



© Crown copyright and database right to 2014 Ordnance Survey 100019606

**Proposed Parking and Access improvements at High Elms Lane, Garston**

Drawn	Designed	Approved	Revision Date	Scale	Project	Sheet No.	Revision
NS	NS	PAS	DEC 18	1:1000	ITP-XXXXX-S1-005-A3	001	R1