

Hertfordshire County Council

**The Local Authority's statement of education need in relation to the
allocation of two sites for new secondary schools in the Local Plan for
Three Rivers District Council**

September 2013



1. EXECUTIVE SUMMARY AND CONCLUSIONS

- 1.1 Planning school places is a risk management activity balancing the use of forecasts against the critical need to ensure that young people will be able to access school places.
- 1.2 As commissioner of school places Hertfordshire County Council (HCC) faces the challenge of how to fulfil its obligation to offer places to the children of all residents who require one while supporting fair access and parental choice, irrespective of county boundaries.
- 1.3 Historically, there has been a significant movement of secondary age pupils between the education planning areas (EPAs) of Watford, Rickmansworth and Bushey, collectively referred to as South West Herts. In recent years increasing concern has been expressed by the local community that pupils from Watford and Three Rivers have been unable to access their choice of local secondary schools and have been allocated an alternative school which is sometimes at some distance from their home. The significant increase in the primary age population in recent years and the growth in housing projected for the area further emphasise the need to make provision for additional places.
- 1.4 There is evidence of a growing demand for more secondary school places in South West Herts, which cover the towns of Radlett, Bushey, Watford, Abbots Langley, Rickmansworth, Croxley Green, Chorleywood, Maple Cross and the surrounding rural areas.
- 1.5 The most recent forecasts for the area project a deficit of secondary school places from 2014/15 of 1¹ form of entry (f.e.), increasing to 3 f.e. from 2016/17 and to 11 f.e. from 2018/19. By 2022/23 this deficit is projected to rise to over 18 f.e. without any surplus capacity.
- 1.5 In terms of spatial planning it would be prudent to plan for at least a 5% surplus of places to allow for some fluctuation in numbers and for a degree of parental preference (the Audit Commission previously indicated that Local Authorities should plan to no more than 10%). Therefore, taking account of the forecast pupil numbers, it would be appropriate to plan for an additional 1 f.e. to ensure adequate flexibility over the planned period to 2025 i.e. a maximum of 19 f.e.
- 1.6 This represents an increase to the previous forecast reported in the submission in September 2011, where a need for 16 f.e. in 2018/19 was articulated.
- 1.7 Schools in Three Rivers, Watford and Bushey provide high quality education for which there is great demand. Some of that demand is from neighbouring communities outside of the county where Hertfordshire schools are geographically the closest school, or where young people look to the schools within South West

¹ 1 f.e. equates to 30 children per year group

Herts as their preferred choice of secondary education. The pupil forecasts take into account the demand from neighbouring local authorities.

- 1.8 In South West Herts there are now no community secondary schools, for which HCC is the admissions authority. All schools in the local area have academy or free school status with responsibility for their own admissions. Admissions to these schools are in accordance with their admission arrangements which reflect their ethos. Some of these arrangements include partial selection based on ability and aptitude and the communities from which pupils traditionally have attended.
- 1.9 A change in admission policies of these schools may have some impact on the local pattern of pupil distribution. Any change, however, is most likely to impact on the geographical spread of allocations rather than add to the capacity available for the area. Changes to admission arrangements thereby could not be relied upon as an alternative to providing much needed additional capacity and a long term planning strategy with the scope and flexibility to provide those additional places in the future continues to be necessary.
- 1.10 Careful consideration has been given to the capacity of all existing secondary schools to expand. The flexibility for many existing schools to expand however is limited by town planning or highways constraints and they cannot be expanded beyond their current capacity.
- 1.11 In 2012 the schools with the potential to expand (see section 5) were approached to take part in further feasibility work to help ascertain the scope and cost of potential expansion to meet immediate need.
- 1.12 In summary, despite the ability to achieve some additional capacity for school places in existing schools, it is concluded that two sites should be reserved for education use to provide the flexibility required to provide school places in the short, medium and long term. This reasons for this are as follows:
 - All schools are academies or free schools and are responsible for their own admissions arrangements. HCC does not have the ability to enforce expansion of these schools.
 - The existing schools in the area could only deliver theoretically up to 7 f.e of expansion. However, even if the existing schools were willing to expand, their physical capacity to expand in accordance with BB98 site guidelines² is seriously constrained by town planning and highway constraints. In some cases their ability to expand would be subject to acquiring third party land.
 - Further work with the existing schools has identified that 2 f.e. of permanent expansion, and 1 f.e. temporary expansion, could be delivered in the short to medium term (2014/16 - 2016/17). Furthermore, The Reach Free School (4 f.e.) is due to open in the area in September 2013.

² HCC has adopted BB98 guidelines for school site capacity

- Taking into consideration work undertaken with the existing schools, and the opening of The Reach Free School (see section 6); there remains a shortage of places from 2017/18, which will increase to over 12 f.e. across the area as a whole by 2022/23. In terms of spatial planning it would be prudent to plan for at least a 5% surplus of places to allow for some fluctuation in numbers and for a degree of parental preference, resulting in a continuing need of 13 f.e, across the area as a whole by 2022/23.

- 1.13 Given the geographic spread of existing schools in South West Herts and the growing pressure of pupil numbers in both Rickmansworth and Watford, it is appropriate to secure one site to the east and one to the west of the District to facilitate a more flexible approach.
- 1.14 A planning appraisal undertaken by Vincent and Gorbong on behalf of the County Council concludes that site S (a) and site S (d) are most suitable and appropriately located to meet this need.
- 1.15 The increase in secondary age pupil numbers forecast coincides with the formulation of the Local Plans for Local Planning Authorities, which set out spatial plans for the next 15 to 20 years. It is most appropriate for the provision of these two new secondary school sites to be included within the Site Allocations Local Development Document for Three Rivers District Council.

2. ROLE OF THE COUNTY COUNCIL

- 2.1 HCC is the local authority and is subject to a number of statutory duties and responsibilities including:
- promoting high standards of education
 - planning and commissioning school places in its area
 - extending diversity and choice
 - co-ordinating admissions for all maintained schools
 - resourcing shared maintenance, improvement to and provision of the built environment, and securing value for money
- 2.2 In coming to a view about the most appropriate strategy HCC is looking for a solution which takes into account each of these elements.

High standards of education

- 2.3 HCC has a key role under the School Standards and Framework Act and the Education and Inspections Act 2006 to promote high educational standards. It is also the lead partner in local children's trust arrangements.

- 2.4 Hertfordshire fulfils its responsibilities through the Hertfordshire Learning Partnership which recognises that pupil performance and wellbeing go hand in hand and that world class standards will only be reached by addressing both. The Partnership is for all maintained schools and other places where learning occurs in Hertfordshire. It sets out the key principles for the way in which schools, HCC and the wider children's partnership work together to break down barriers to learning and improve outcomes for all children and young people.
- 2.5 Educational standards are high across Hertfordshire. For secondary schools, in 2012 the average percentage of pupils achieving Level 2 (5+A*-C) including English and Maths was 65.8% higher than the national average and 11.4% above the national average for all schools.

Ensuring a sufficient supply of school places in its area

- 2.6 HCC has a duty to secure sufficient school places in its area and to allocate those places to the children of all parents who want one.
- 2.7 HCC fulfils these planning responsibilities by forecasting the demand for school places in order to identify an appropriate balance between supply and demand within the maintained sector. It negotiates the right number of places on an annual basis and undertakes longer term strategic planning.
- 2.8 Greater school autonomy can lead to situations where individual academies chose not to expand to meet the rising demand for new places and in areas such as South West Herts, where all schools are academies, these challenges can be even more acute.
- 2.9 Nationally, there has been a substantial increase in the demand for school places. This changing trend is being experienced in Hertfordshire and HCC publishes its strategy document: 'Meeting Rising Demand for School Places'. The strategy focuses largely on primary provision (where the increase in demand generally is being experienced first) but recognises the rising demand for secondary school places too, including South West Herts.
- 2.10 The role of HCC in ensuring a sufficient supply of suitable places is now that of a Commissioner rather than as a direct provider of school places. There is a legal presumption that any new school will be either an academy or free school and therefore HCC may liaise with sponsors to initiate the provision of a new school. It may also negotiate any increases or decreases of capacity of existing schools.
- 2.11 HCC also has a duty to 'secure diversity in the provision of schools and increase opportunities for parental choice' (Education and Inspections Act 2006). Hertfordshire has a rich diversity of provision including every category of school provision, many of which are faith or single sex schools. HCC celebrates this diversity and is keen to ensure that parents continue to have a choice of good quality school provision for which they can express a preference under determined

admission arrangements. It takes diversity and choice into account when proposing or considering changes to school provision.

- 2.12 HCC also has a duty to encourage over-subscribed schools to expand (Education and Inspections Act 2006).

School Improvement

- 2.13 While schools themselves have active responsibility for their improvement in standards (Academy Act 2011), and for those of other school in the system, HCC continues to hold a democratic accountability for securing outcomes for children and young people within their area by promoting high standards and the fulfilment of learning potential.

Co-ordinating admissions and ensuring fair access

- 2.14 It is a statutory requirement that HCC co-ordinates the allocation of school places on behalf of all admissions authorities in their area, in accordance with their determined admission criteria. HCC is the admissions authority for all community and voluntary-controlled schools whereas foundation, trust, voluntary-aided schools, academies and 'free' schools are their own admission authority and responsible for setting their own admission criteria. The current School Admissions Code requires all admitting authorities to determine their admission arrangements by 15th April in the previous academic year (i.e. April 2013 for admission in September 2014). This determination includes the number of places to be available in the relevant admission year (Published Admission Number) and the criteria order by which such places are to be allocated.
- 2.15 The current Code includes a duty on HCC to scrutinise all other maintained sector admissions authorities admissions arrangements to ensure that they are in compliance with the Admissions Code.
- 2.16 The Code places emphasis on fair access to school places. Admissions arrangements can affect whether local people can access local school places.

Resourcing shared maintenance, improvement to and provision of the built environment and securing value for money

- 2.17 The supply of funding for school places is limited and currently includes central government grants, and developers' contributions to the infrastructure requirements arising from new housing development proposals.
- 2.18 HCC receives formulaic basic need capital allocations from the Department for Education (DfE) for expanding school places where appropriate, consistent with HCC statutory responsibility for school places.

- 2.19 While £37.3 million was allocated to HCC for the 2013/14 and 2014/15 period, for providing school places across the County, this is not necessarily a good indicator of what will be allocated from 2015/16 onwards. Local authorities were also invited by the DfE to bid for Targeted Basic Need Programme funding for expansion projects programmed to complete by 2015/16. However, there is no commitment to extend this bidding opportunity in future years.
- 2.20 Central government also retains some capital funding for academies and free schools, related mainly to building maintenance and potential expansion. This funding may be accessible in the future, depending upon the delivery mechanism for a new school.
- 2.21 While HCC has financial responsibilities for the maintenance of existing community and foundation school premises, academies and free Schools bid directly to the Education Funding Agency (EFA) for their financial support.

3. EDUCATION PROVISION IN THE RICKMANSWORTH, WATFORD AND BUSHEY EPAs

- 3.1 HCC plans the availability of school places by monitoring the supply and demand for them across the area by a system of forecasting demand and comparing them to the number of places available. For secondary education it does so by the division of the whole of Hertfordshire into Education Planning Areas. This provides an early warning system for any potential imbalance of demand and supply for which a change in the number of places may be required. An outline of HCC’s forecasting methodology is provided below in section 4.
- 3.2 The secondary EPAs of Watford, Rickmansworth and Bushey, referred to as South West Herts, incorporate the towns of Abbots Langley, Bushey, Chorleywood Croxley Green, Radlett, Maple Cross, Rickmansworth, Watford and the surrounding rural areas within the County (see Appendix A). Given the close proximity of South West Herts to the London Boroughs of Harrow and Hillingdon and the borders of Buckinghamshire, full consideration is given to applications from these local authorities as preference cannot be given to those residing within the Hertfordshire county boundary. Any cross border flows are taken into account in the forecasting methodology described in section 4 below.
- 3.3 South West Herts benefits from a diverse range of good quality secondary provision including co-educational, single-sex, faith, academies and a free school, which are located within the following areas:

| | District/Borough area |
|--------------------------|-------------------------------|
| Bushey EPA | |
| The Bushey Academy | Hertsmere District Council |
| Bushey Meads | Hertsmere District Council |
| Queens | Hertsmere District Council |
| Rickmansworth EPA | |
| Reach Free School | Three Rivers District Council |

| | |
|---|--|
| Rickmansworth St Clement Danes St Joan of Arc Catholic School | Three Rivers District Council Three rivers District Council Three Rivers District Council |
| Watford EPA Francis Combe Academy Parmiter's St Michael's Catholic Academy Watford Grammar School for Boys Watford Grammar School for Girls Westfield Community Technology College | Watford Borough Council Three Rivers District Council Three Rivers District Council Watford Borough Council Watford Borough Council Watford borough Council |

3.4 All state funded secondary providers in South West Herts are academies. More details are provided in Appendix B below.

3.5 In addition, the following larger independent (fee-paying) providers are located within South West Herts, for which HCC has no responsibilities:

Bushey EPA

Aldenham School
Edge Grove Preparatory School
Haberdashers' Aske's Boys' School
Haberdashers' Aske's School for Girls
St Margaret's School (Bushey)

Rickmansworth EPA

Royal Masonic School for Girls

Watford EPA

Merchant Taylors' School
Stanborough School (Watford)

3.6 The diversity of provision, the popularity of schools and the proximity of the county-boundary makes the planning of school places in this area particularly complex.

4. REVIEW OF PUPIL FORECASTS TO 2031

4.1 HCC produces bespoke local forecasts of the demand for secondary school places to anticipate a shortfall or surplus of places by EPAs. Pupil numbers are forecast taking into account:

- historic pupil numbers in each school year group
- 0-5 year olds registered with general practitioners
- primary pupils moving on to secondary school
- additional pupils arising from new housing developments

- pupil movement patterns, taking account of cross-area flows both within planning areas within Hertfordshire and in and out of the county, as well as from the independent sector.

4.2 Secondary school forecasts can only be based on actual children, both in schools and registered with general practitioners, for 12 years ahead. Beyond 2024/25, pupil projections inevitably are less certain as those children who will require a secondary place are not yet born.

Historic numbers of pupils on roll and forecasts

- 4.3 The latest forecasts of pupil numbers for 2013/14 and beyond for Bushey, Rickmansworth and Watford EPAs together with a summary of these three areas are shown in Appendix C (excluding Reach Free School opening in Sept 2013). The number of Year 7 places available are based on PANs, some of which will have been raised following previous expansions in the EPA, and local agreements. The forecast includes a projection of the additional pupils from planned new housing.
- 4.4 An absolute shortage of places is forecast from 2014/15, increasing to 3 f.e. from 2016/17 and 11 f.e. from 2018/19. From 2022/23 there is a deficit of school places of over 18 f.e., with no surplus capacity.
- 4.5 The most recent forecast for secondary school places has risen significantly since September 2011, when it was reported that an absolute shortage of places was forecast from 2014/15, with an increase to 10.5 f.e. across the area as a whole by 2018/19. This steep rise reflects the significant increase in primary school places experienced in these areas in recent years.
- 4.6 There is a clear need for additional places to meet the forecast increase in demand. The most significant increase is in Watford, which reflects current continuing increases being seen in the primary age population. In terms of spatial planning it would be prudent to plan for at least a 5% surplus of places to allow for some fluctuation in numbers and for a degree of parental preference (the Audit Commission previously indicated that Local Authorities should plan to no more than 10%). Therefore, taking account of the forecast pupil numbers, it would be appropriate to plan for an additional 1 f.e. (5%) to ensure adequate flexibility over the planned period – a maximum of 19 f.e.³ in total.

5. THE POTENTIAL FOR CREATING ADDITIONAL PLACES

5.1 Town planning feasibility work was undertaken in summer 2010 to consider the suitability of existing schools to expand to take additional pupils, the following table summarises the outcomes:

³ Forecast in Appendix C and D does not take into account 5% of surplus places to ensure adequate flexibility over the planned period

| School | District/Borough | Potential to expand ⁴ | Comment |
|----------------------------------|-------------------------------|--|---|
| Queens' | Hertsmere Borough Council | 1 f.e. | School is already 9 FE. |
| Bushey Meads | Hertsmere Borough Council | 3 f.e. | Located furthest east of the secondary schools in Bushey – furthest from Watford. Would require purchase of third party land to achieve 3 f.e. expansion ⁵ . |
| Bushey Academy (The) | Hertsmere Borough Council | No | Town planning issues Temp expansion possible for three years only from 2014/15 |
| Watford Grammar School for Girls | Watford Borough Council | No | Site and town planning issues |
| Watford Grammar School for Boys | Watford Borough Council | No | Site and town planning issues |
| Francis Combe Academy | Watford Borough Council | No | Site and town planning issues |
| Westfield Community College | Watford Borough Council | No (but potentially possible with detached playing fields) | In the area of growing demand. Limited school site. Proposed Academy status 1 Sept 2013. The school is being re-built as part of the DfE Priority Schools Building Programme. |
| St Michael's Catholic Academy | Three Rivers District Council | No | Site and town planning issues |
| Parmiter's | Three Rivers District Council | 2 f.e | Green belt site – potential town planning constraints |
| St Clement Danes | Three Rivers District Council | 1 f.e | Green belt site/AONB – potential town planning constraints. Potential need for third party land. |

⁴ Based on Building Bulletin 98 (BB98) site standards, which is the HCC adopted standard for site size and school accommodation.

| | | | |
|-----------------------|-------------------------------|---|--|
| Rickmansworth | Three Rivers District Council | No | Site and town planning issues |
| St Joan of Arc | Three Rivers District Council | No (but potentially possible with detached playing fields) | Limited school site. This denominational school currently attracts a high proportion of pupils from London Boroughs. Expansion of this school may not increase local access to places without reconsideration of admission rules. |
| The Reach Free School | Three Rivers District Council | No. (The school will be in temporary accommodation until its new premises have been built by the EFA) | Due to open September 2013 subject to location of temporary premises. |

5.2 This analysis indicates the 'potential' for existing school expansion. There may be 'theoretical' capacity to increase provision by a total of 7 f.e. This potential capacity may not be deliverable however, especially where third party land may be required. It is also important to recognise that all of these schools are now academies and that HCC cannot enforce an expansion.

5.3 In 2012 the schools with the potential to expand (as indicated in the table in 5.1) were approached to take part in further feasibility work to help ascertain the scope and cost of potential expansion to meet immediate need. St Clement Danes, Bushey Meads and Queens agreed to take part in this feasibility. Parmiter's has agreed to consider this option in the future, and The Bushey Academy has offered to provide a 1 f.e. bulge class within its existing accommodation for three years only from 2014/15.

6. Proposed school planning strategy

6.1 Short to medium term (2014/15 to 2016/17)

The following sets out the short to medium term school planning strategy. This is also demonstrated in Appendix D, which sets out the forecast position taking into account the expansion options listed below:

- The DfE has provided conditional approval for the opening of Reach Free School which will open as a 4 f.e. Free School in September 2013. At the time of writing the school are due to open in temporary premises until permanent premises have been secured.

- Proposed temporary expansion of The Bushey Academy by 1 f.e. from 2014/15-2016/17. The school has recently been re-built and has spare accommodation to allow for a temporary 1 f.e expansion for 3 years only until the school becomes full.
- Proposed permanent expansion of St Clement Danes by 1 f.e. from 2015/16.
- Proposed permanent expansion of Bushey Meads by 1 f.e. from 2015/16. This 1 f.e. expansion is based on the school's ability to operate on its existing site without the purchase of third party land.

6.2 Taking into consideration the 'short to medium term school place planning strategy', there is a surplus of over 4 f.e. across the area up to 2016/17. This surplus however, is as a result of the additional places provided by the Reach Free School and The Bushey Academy.

6.3 The reason for the additional places is due to the uncertainty around whether the Reach Free School will have an immediate impact on the provision of school places in this area. This will be monitored closely over the next few years, but in the meantime The Bushey Academy has agreed to a 1 f.e. temporary expansion from 2014/15-2016/17. This agreement will be flexible, and will be determined on a year by year basis and in accordance with the forecast need.

6.4 Despite the uncertainty around the Reach Free School, and the double counting of places from The Bushey Academy, there remains an absolute shortage of places from 2017/18, which will increase to 8 f.e. across the area as a whole by 2023/24, but with a peak shortfall of 12 f.e. in 2022/23.

6.5 In terms of spatial planning it is prudent to plan for at least a 5% surplus of places to allow for some fluctuation in numbers and for a degree of parental preference, resulting in a continuing need of at least 12 f.e, across the area as a whole in every year from 2019/20 onwards.

6.6 In the future Queens may agree to expand by 1 f.e. and Parmiters may agree to expand by up to 2 f.e. Furthermore, if third party land can be identified and acquired, Bushey Meads may also agree to expand up to a further 2 f.e. If the expansion of these schools came to fruition there would be a resulting continuing need of 8 f.e. by 2022/23.

6.7 However, expansion at Queens, Parmiters and further expansion at Bushey Meads schools is considered doubtful because these schools are academies and as a result HCC is not able to enforce expansion.

6.8 Bushey Meads is an academy it is not tied to BB98 site standards. Theoretically therefore a further 2fe expansion of the school could be possible on its existing site. However, this has not been fully tested and may not be acceptable from an education standards point of view and in town planning terms.

6.9 In conclusion, the expansion of Queens and Parmiters, and further expansion of Bushey Meads, has not been included in the school planning strategy.

6.10 Long term (2017/18 and beyond)

Taking into consideration the short to medium term school place planning strategy (and assuming that the Reach Free School fills to its 4 f.e. capacity), there is a deficit of 4 f.e. in 2018/19, rising to 8 f.e. in 2019/20 with a peak deficit of 12 f.e. by 2022/23.

6.11 Planning a flexible approach to delivering between 12–13⁶ f.e. of additional capacity will require the allocation of two sites, each capable of providing 6 f.e. of capacity.

6.12 Given the current need for school places, which is demonstrated by the unprecedented rise in need for primary school places in South West Herts. It would be prudent from a spatial planning perspective to plan for school sites that have the capacity to provide up to 8 f.e.

6.13 From a school place planning perspective it is appropriate to secure one site to the east and one to the west of the District to facilitate a more flexible approach.

6.14 From an education perspective HCC considers any school re-organisation or change in provision against the following four criteria:

Criterion 1 - does the option provide places where they are needed?

Criterion 2 - does the option promote and not undermine education achievement?

Criterion 3 - is the option sustainable in terms of deliverability and cost?

Criterion 4 - what are the transitional arrangements?

6.15 These cannot be applied in full at this time, but the following assessment has been made:

Criterion 1 - Securing two secondary school sites, one to the east, one to the west of the Three Rivers District, will provide flexibility in planning school places across the planned period.

Criteria 2 and 3 - From an education perspective a secondary school site (where they are 6-8 f.e.) should meet the following criteria, according to DfE recommended guidelines for secondary schools (Building Bulletin 98) :-

- 12-15 Hectares (c.4 ha will be built and include hard play and parking areas)
- Sustainably located/well located to area of demand
- Flat
- Accessible to pedestrians, vehicles and public transport
- Free from site constraints (if possible)
- Deliverable

⁶ Taking into account 5% for surplus capacity

- Whole i.e. -not subdivided by vehicular access or the need for detached playing fields

The town planning appraisals undertaken by Vincent and Gorbng (submitted 15 September 2011) demonstrate that sites S(a) and (S)d are considered most deliverable in town planning terms. Site S(d) the only site which is likely to be 'split' in some way, which is not preferable educationally. Furthermore, HCC does not consider this site to be deliverable based on technical work that has been completed and presented to the District Council⁷.

Criterion 4 - It is difficult to assess whether there would be any difference between the four sites at this stage.

As a result of this analysis, the two sites which are considered most appropriate and deliverable, which provide a good geographical spread of school places, are sites S(a) and S(d). Further information on the selection of these sites is included in the town planning report compiled by Vincent and Gorbng.

Appendices

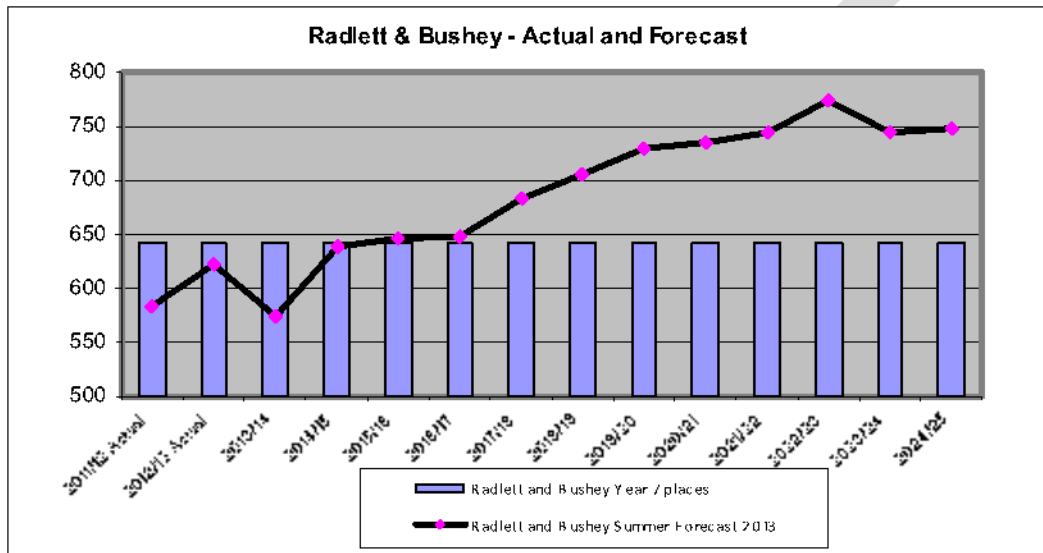
- A Map showing the school place planning areas of South west Herts.
- B Information about secondary providers in South West Herts
- C Forecast of pupil numbers 2013/14 – 2023/24 for the EPAs of Radlett & Bushey, Rickmansworth and Watford (excluding the Reach Free School opening Sept 2013).
- D Forecast of pupil numbers 2013/14 – 2023/24 for the EPAs of Radlett & Bushey, Rickmansworth and Watford (including the Reach Free School and expansions planned for the short to medium term strategy).

⁷ Vincent and Gorbng report March 2012

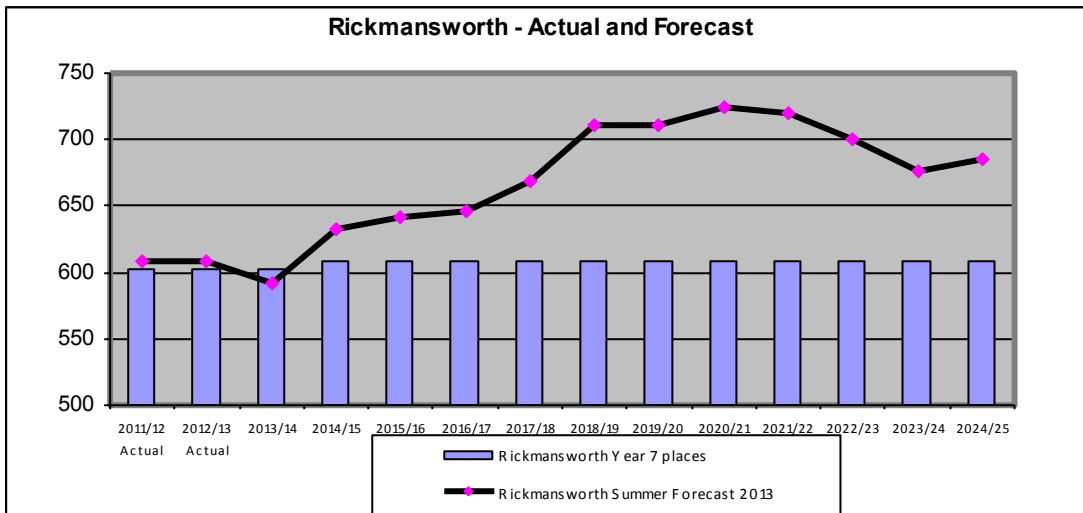
Appendix B - Information about secondary providers in South West Herts

| Name | Category | Type | Specialism | PAN 2013/14 |
|-----------------------------------|-----------------|-------------|--|------------------------|
| Queens | Academy | Mixed | Sports and Science | 265 |
| Bushey Meads | Academy | Mixed | Technology College | 170 |
| Bushey Academy (The) | Academy | Mixed | Business and Communication | 210 |
| Watford Grammar School for Girls | Academy | Girls | Visual Arts and Maths & Computing | 180 |
| Watford Grammar School for Boys | Academy | Boys | Science and Languages | 190 |
| Francis Combe Academy | Academy | Mixed | English, Art and media | 210 |
| Westfield Community College | Academy | Mixed | Technology | 240 |
| St Michael's Catholic High School | Academy (Faith) | Mixed | Theology, Philosophy, English and Geography. | 180 |
| Parmiter's | Academy | Mixed | Maths, Science, Design & Technology and ICT | 206 |
| St Clement Danes | Academy (Faith) | Mixed | Languages and Science | 208 |
| Rickmansworth | Academy | Mixed | Arts College and Science | 190 |
| St Joan of Arc | Academy (Faith) | Mixed | Science Maths and Computing College | 210 |
| Reach Free School | Free School | Mixed | Free School | 120 |

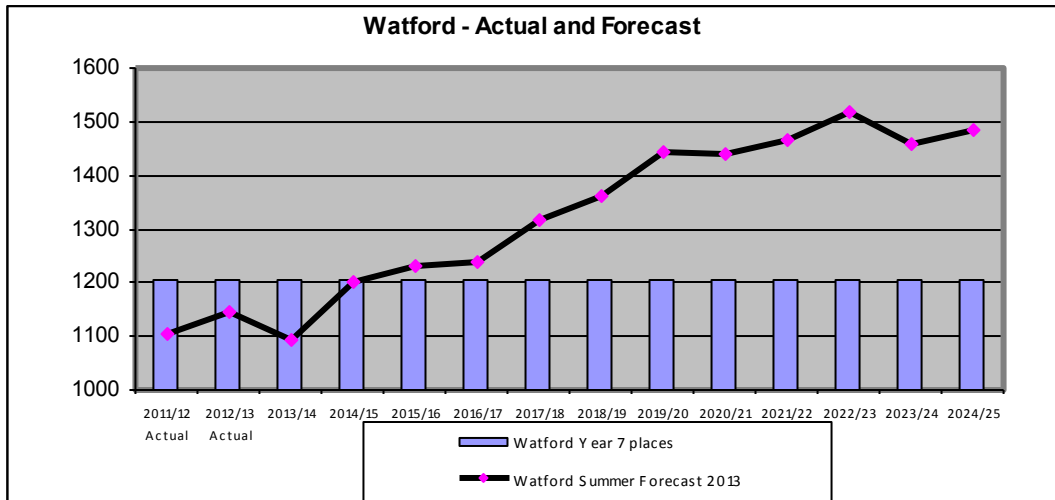
Appendix C - Forecast of pupil numbers 2013/14 – 2023/24 for the EPAs of Radlett & Bushey, Rickmansworth and Watford (excluding the Reach Free School opening Sept 2013)



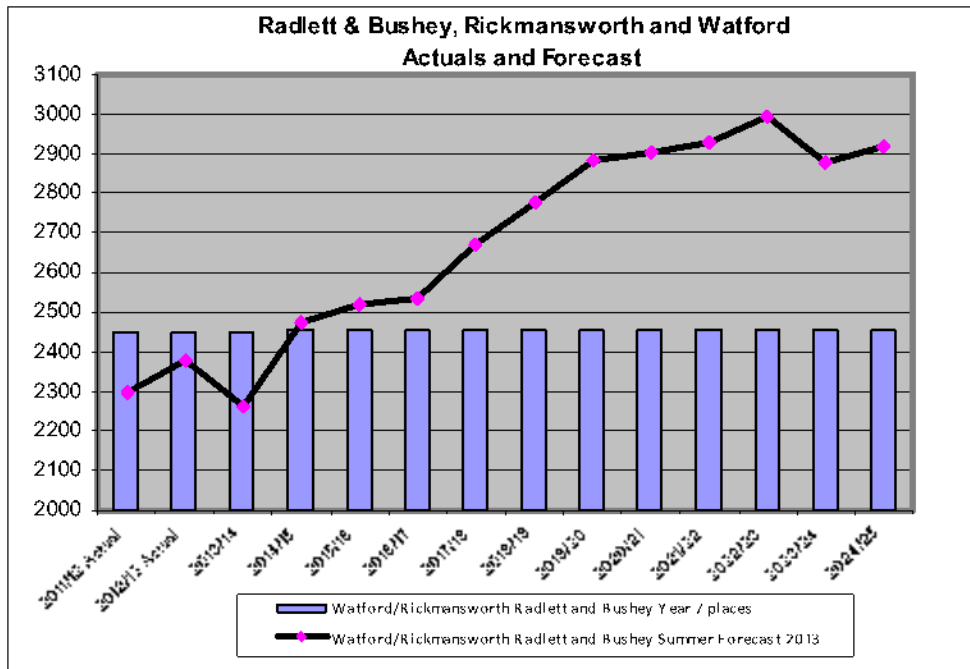
| Bushey | | | | | |
|----------------|------------------------------------|----------|------------------|-----------------------|------|
| Year | Places Available without Increases | Forecast | Number of Places | Gap | |
| | | | | % of Places Available | FE |
| 2011/12 Actual | 642 | 583 | 59 | 9.2% | 2.0 |
| 2012/13 Actual | 642 | 622 | 20 | 3.1% | 0.7 |
| 2013/14 | 642 | 574 | 68 | 10.6% | 2.3 |
| 2014/15 | 642 | 638 | 4 | 0.6% | 0.1 |
| 2015/16 | 642 | 647 | -5 | -0.8% | -0.2 |
| 2016/17 | 642 | 649 | -7 | -1.1% | -0.2 |
| 2017/18 | 642 | 684 | -42 | -6.5% | -1.4 |
| 2018/19 | 642 | 706 | -64 | -10.0% | -2.1 |
| 2019/20 | 642 | 729 | -87 | -13.6% | -2.9 |
| 2020/21 | 642 | 736 | -94 | -14.6% | -3.1 |
| 2021/22 | 642 | 745 | -103 | -16.0% | -3.4 |
| 2022/23 | 642 | 775 | -133 | -20.7% | -4.4 |
| 2023/24 | 642 | 744 | -102 | -15.9% | -3.4 |



| Rickmansworth | | | | | |
|----------------|------------------|----------|------------------|-----------------------|------|
| Year | Places Available | Forecast | Gap | | |
| | | | Number of Places | % of Places Available | FE |
| 2011/12 Actual | 603 | 609 | -6 | -1.0% | -0.2 |
| 2012/13 Actual | 603 | 609 | -6 | -1.0% | -0.2 |
| 2013/14 | 603 | 592 | 11 | 1.8% | 0.4 |
| 2014/15 | 608 | 633 | -25 | -4.1% | -0.8 |
| 2015/16 | 608 | 641 | -33 | -5.4% | -1.1 |
| 2016/17 | 608 | 646 | -38 | -6.3% | -1.3 |
| 2017/18 | 608 | 669 | -61 | -10.0% | -2.0 |
| 2018/19 | 608 | 711 | -103 | -16.9% | -3.4 |
| 2019/20 | 608 | 711 | -103 | -16.9% | -3.4 |
| 2020/21 | 608 | 724 | -116 | -19.1% | -3.9 |
| 2021/22 | 608 | 720 | -112 | -18.4% | -3.7 |
| 2022/23 | 608 | 701 | -93 | -15.3% | -3.1 |
| 2023/24 | 608 | 676 | -68 | -11.2% | -2.3 |

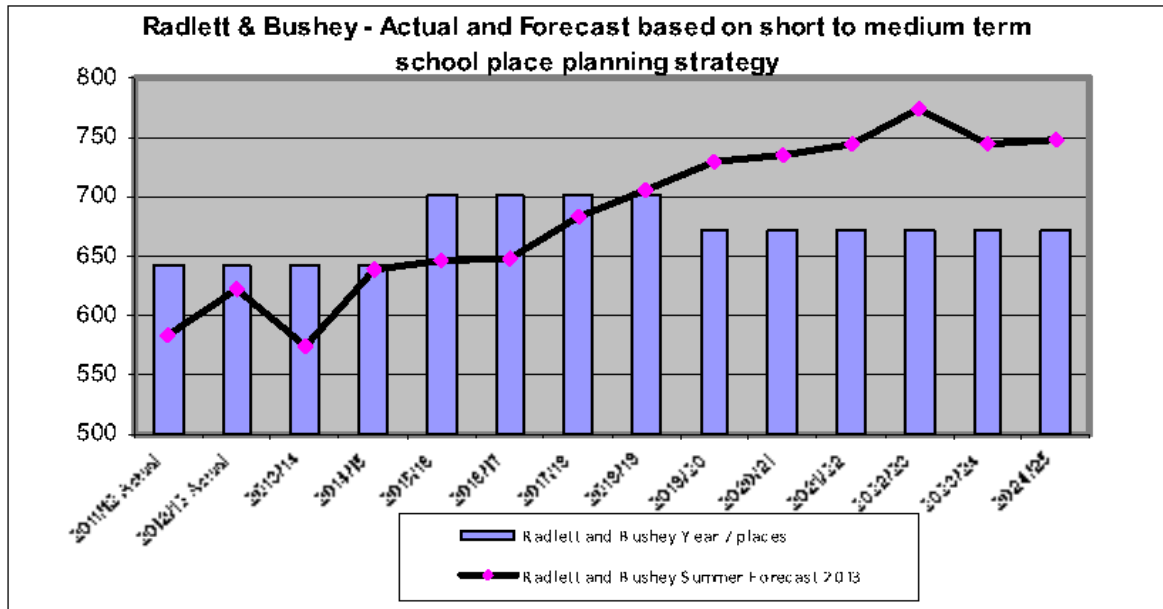


| Watford | | | | | |
|----------------|------------------------------------|----------|------------------|-----------------------|------|
| Year | Places Available without Increases | Forecast | Number of Places | Gap | |
| | | | | % of Places Available | FE |
| 2011/12 Actual | 1206 | 1104 | 102 | 8.5% | 3.4 |
| 2012/13 Actual | 1206 | 1145 | 61 | 5.1% | 2.0 |
| 2013/14 | 1206 | 1095 | 111 | 9.2% | 3.7 |
| 2014/15 | 1206 | 1201 | 5 | 0.4% | 0.2 |
| 2015/16 | 1206 | 1230 | -24 | -2.0% | -0.8 |
| 2016/17 | 1206 | 1240 | -34 | -2.8% | -1.1 |
| 2017/18 | 1206 | 1318 | -112 | -9.3% | -3.7 |
| 2018/19 | 1206 | 1360 | -154 | -12.8% | -5.1 |
| 2019/20 | 1206 | 1445 | -239 | -19.8% | -8.0 |
| 2020/21 | 1206 | 1441 | -235 | -19.5% | -7.8 |
| 2021/22 | 1206 | 1464 | -258 | -21.4% | -8.6 |
| 2022/23 | 1206 | 1518 | -312 | -25.9% | - |
| 2023/24 | 1206 | 1460 | -254 | -21.1% | 10.4 |

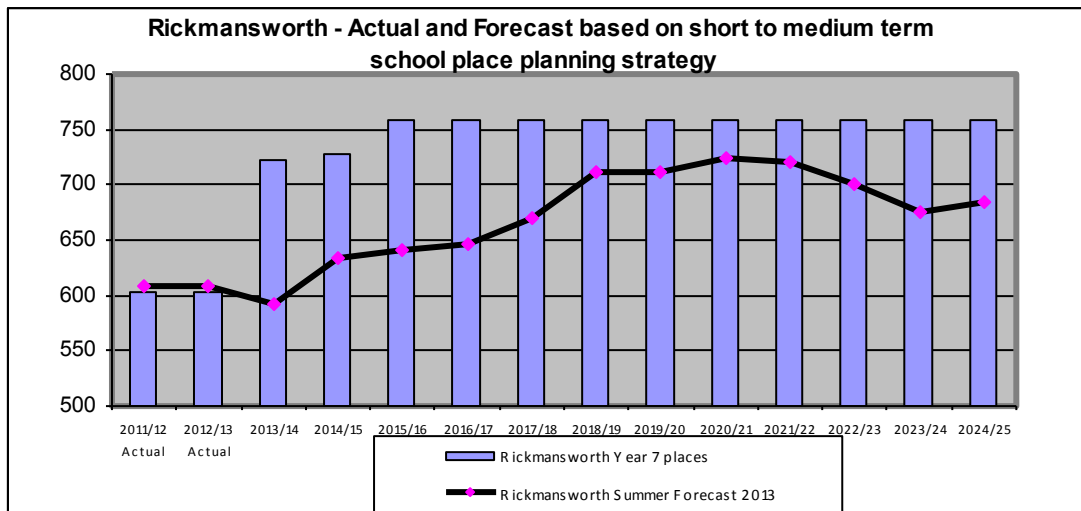


| Radlett & Bushey, Rickmansworth and Watford | | | | | |
|---|------------------|----------|------------------|-----------------------|-------|
| Year | Places Available | Forecast | Gap | | |
| | | | Number of Places | % of Places Available | FE |
| 2011/12 Actual | 2451 | 2296 | 155 | 6.3% | 5.2 |
| 2012/13 Actual | 2451 | 2376 | 75 | 3.1% | 2.5 |
| 2013/14 | 2451 | 2261 | 190 | 7.8% | 6.3 |
| 2014/15 | 2456 | 2472 | -16 | -0.7% | -0.5 |
| 2015/16 | 2456 | 2518 | -62 | -2.5% | -2.1 |
| 2016/17 | 2456 | 2535 | -79 | -3.2% | -2.6 |
| 2017/18 | 2456 | 2671 | -215 | -8.8% | -7.2 |
| 2018/19 | 2456 | 2777 | -321 | -13.1% | -10.7 |
| 2019/20 | 2456 | 2885 | -429 | -17.5% | -14.3 |
| 2020/21 | 2456 | 2901 | -445 | -18.1% | -14.8 |
| 2021/22 | 2456 | 2929 | -473 | -19.3% | -15.8 |
| 2022/23 | 2456 | 2994 | -538 | -21.9% | -17.9 |
| 2023/24 | 2456 | 2880 | -424 | -17.3% | -14.1 |

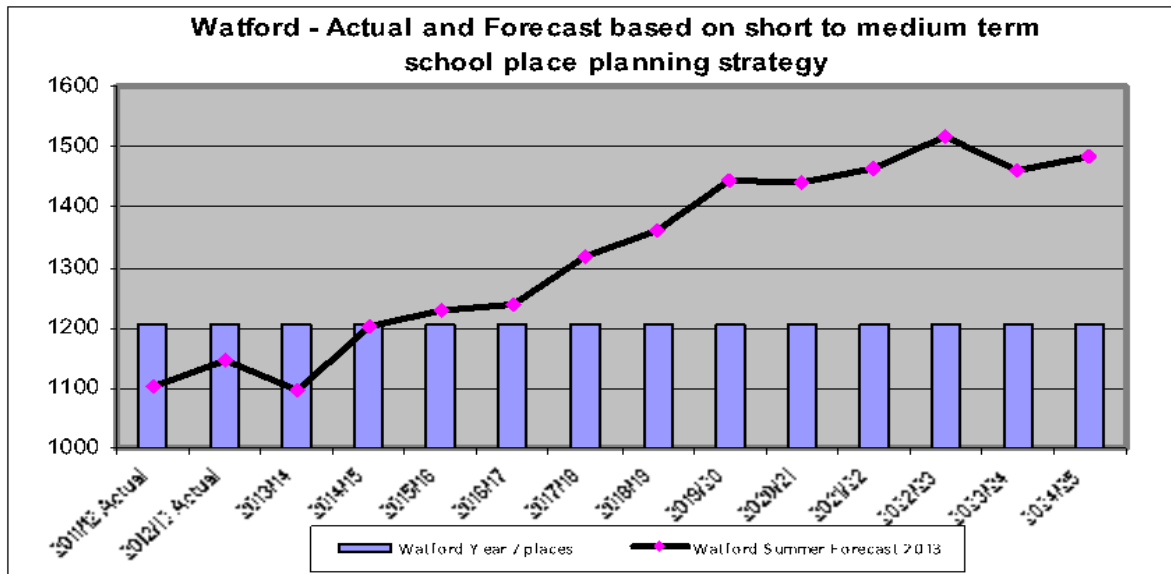
Appendix D - Forecast of pupil numbers 2013/14 – 2023/24 for the EPAs of Radlett & Bushey, Rickmansworth and Watford (including expansions planned for the short to medium term strategy, and the opening of the Reach Free School in September 2013)



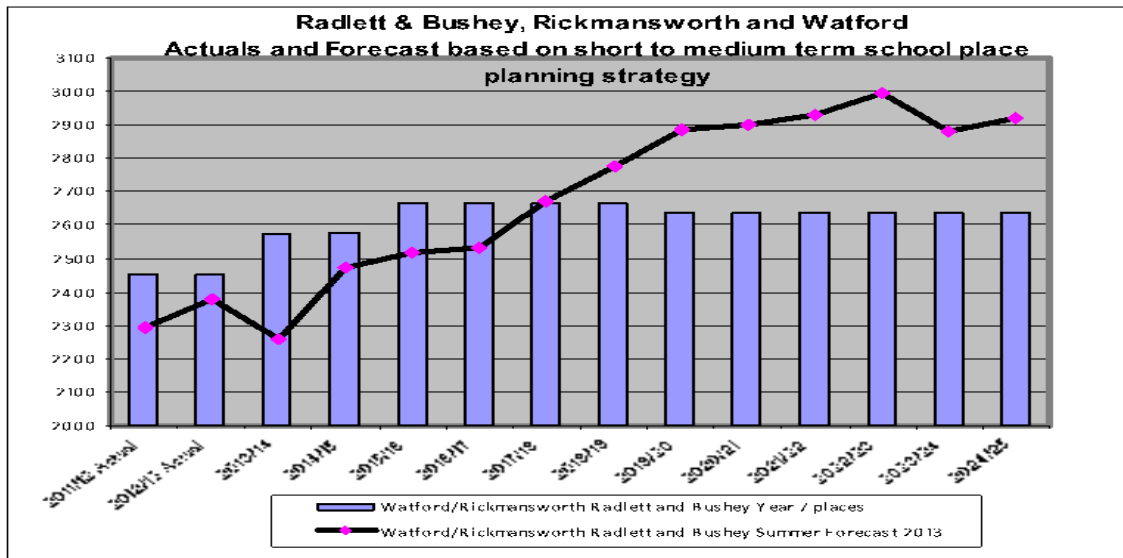
| Bushey | | | | | |
|----------------|------------------|----------|------------------|-----------------------|------|
| Year | Places Available | Forecast | Number of Places | Gap | |
| | | | | % of Places Available | FE |
| 2011/12 Actual | 642 | 583 | 59 | 9.2% | 2.0 |
| 2012/13 Actual | 642 | 622 | 20 | 3.1% | 0.7 |
| 2013/14 | 642 | 574 | 68 | 10.6% | 2.3 |
| 2014/15 | 672 | 638 | 34 | 5.1% | 1.1 |
| 2015/16 | 702 | 647 | 55 | 7.8% | 1.8 |
| 2016/17 | 702 | 649 | 53 | 7.5% | 1.8 |
| 2017/18 | 702 | 684 | 18 | 2.6% | 0.6 |
| 2018/19 | 702 | 706 | -4 | -0.6% | -0.1 |
| 2019/20 | 672 | 729 | -57 | -8.5% | -1.9 |
| 2020/21 | 672 | 736 | -64 | -9.5% | -2.1 |
| 2021/22 | 672 | 745 | -73 | -10.9% | -2.4 |
| 2022/23 | 672 | 775 | -103 | -15.3% | -3.4 |
| 2023/24 | 672 | 744 | -72 | -10.7% | -2.4 |



| Rickmansworth | | | | | |
|----------------|------------------|----------|------------------|-----------------------|------|
| Year | Places Available | Forecast | Number of Places | Gap | |
| | | | | % of Places Available | FE |
| 2011/12 Actual | 603 | 609 | -6 | -1.0% | -0.2 |
| 2012/13 Actual | 603 | 609 | -6 | -1.0% | -0.2 |
| 2013/14 | 723 | 592 | 131 | 18.1% | 4.4 |
| 2014/15 | 728 | 633 | 95 | 13.0% | 3.2 |
| 2015/16 | 758 | 641 | 117 | 15.4% | 3.9 |
| 2016/17 | 758 | 646 | 112 | 14.8% | 3.7 |
| 2017/18 | 758 | 669 | 89 | 11.7% | 3.0 |
| 2018/19 | 758 | 711 | 47 | 6.2% | 1.6 |
| 2019/20 | 758 | 711 | 47 | 6.2% | 1.6 |
| 2020/21 | 758 | 724 | 34 | 4.5% | 1.1 |
| 2021/22 | 758 | 720 | 38 | 5.0% | 1.3 |
| 2022/23 | 758 | 701 | 57 | 7.5% | 1.9 |
| 2023/24 | 758 | 676 | 82 | 10.8% | 2.7 |



| Watford | | | | | |
|----------------|------------------|----------|------------------|-----------------------|-------|
| Year | Places Available | Forecast | Number of Places | Gap | |
| | | | | % of Places Available | FE |
| 2011/12 Actual | 1206 | 1104 | 102 | 8.5% | 3.4 |
| 2012/13 Actual | 1206 | 1145 | 61 | 5.1% | 2.0 |
| 2013/14 | 1206 | 1095 | 111 | 9.2% | 3.7 |
| 2014/15 | 1206 | 1201 | 5 | 0.4% | 0.2 |
| 2015/16 | 1206 | 1230 | -24 | -2.0% | -0.8 |
| 2016/17 | 1206 | 1240 | -34 | -2.8% | -1.1 |
| 2017/18 | 1206 | 1318 | -112 | -9.3% | -3.7 |
| 2018/19 | 1206 | 1360 | -154 | -12.8% | -5.1 |
| 2019/20 | 1206 | 1445 | -239 | -19.8% | -8.0 |
| 2020/21 | 1206 | 1441 | -235 | -19.5% | -7.8 |
| 2021/22 | 1206 | 1464 | -258 | -21.4% | -8.6 |
| 2022/23 | 1206 | 1518 | -312 | -25.9% | -10.4 |
| 2023/24 | 1206 | 1460 | -254 | -21.1% | -8.5 |



| Year | Places Available | Forecast | Gap | | |
|----------------|------------------|----------|------------------|-----------------------|-------|
| | | | Number of Places | % of Places Available | FE |
| 2011/12 Actual | 2451 | 2296 | 155 | 6.3% | 5.2 |
| 2012/13 Actual | 2451 | 2376 | 75 | 3.1% | 2.5 |
| 2013/14 | 2571 | 2261 | 310 | 12.1% | 10.3 |
| 2014/15 | 2606 | 2472 | 134 | 5.1% | 4.5 |
| 2015/16 | 2666 | 2518 | 148 | 5.6% | 4.9 |
| 2016/17 | 2666 | 2535 | 131 | 4.9% | 4.4 |
| 2017/18 | 2666 | 2671 | -5 | -0.2% | -0.2 |
| 2018/19 | 2666 | 2777 | -111 | -4.2% | -3.7 |
| 2019/20 | 2636 | 2885 | -249 | -9.4% | -8.3 |
| 2020/21 | 2636 | 2901 | -265 | -10.1% | -8.8 |
| 2021/22 | 2636 | 2929 | -293 | -11.1% | -9.8 |
| 2022/23 | 2636 | 2994 | -358 | -13.6% | -11.9 |
| 2023/24 | 2636 | 2880 | -244 | -9.3% | -8.1 |